



## High-Performance, Reliable Substation Cabling Options

Essential cable constructions for reliable substation control and operation, designed to operate and protect your substation equipment for the life of your facility.

**Be certain.**  
**Belden.**

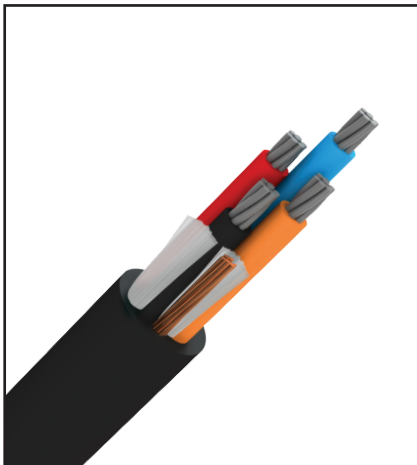
# Get Better Performance and Longer Life in Your Substation Control Application



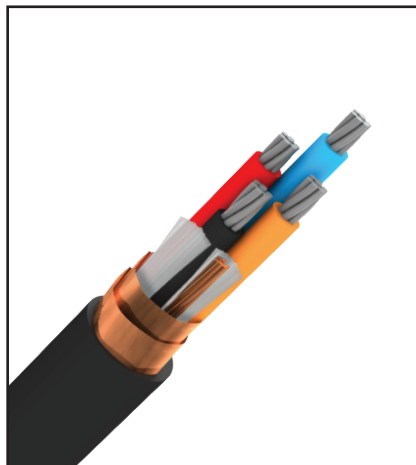
*When you want to improve reliability and extend the life of your substation network, trust Belden. These cables are specifically engineered to provide installed fault-current capabilities in electrical substations. Shielded and Unshielded PT and CT cables are available*

## Proven Quality in Harsh Conditions

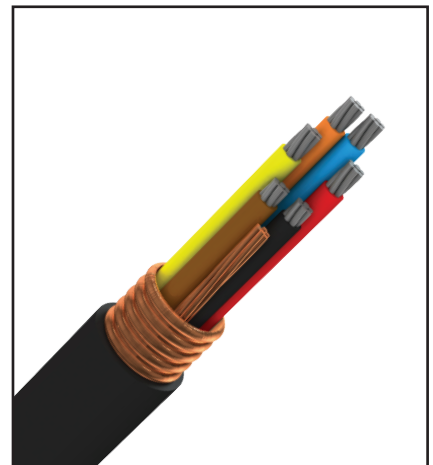
A broad portfolio of options, all backed by Belden's exclusive 10-year warranty



Unshielded



2x2, 3, 5Mil Helical Copper Tape Shield



Longitudinal Corrugated Copper Tape Shield

# Table of Contents

Description	Type	Voltage	Page
Introduction			2
XLPE/CPE	Unshielded Control	600V	4-5
FR-EP/CPE	Unshielded Control	600V	6-7
XLPE/PVC	Unshielded Control	600V	8-9
XLPE/LSZH	Unshielded Control	600V	10-11
XLPE/LSZH X-Link	Unshielded Control	600V	12-13
XLPE/CPE 2x2Mil	Shielded Control	600V	14-15
FR-EP/CPE 2x2Mil	Shielded Control	600V	16-17
XLPE/PVC 2x2Mil	Shielded Control	600V	18-19
XLPE/LSZH 2x2Mil	Shielded Control	600V	20-21
XLPE/X-Link 2x2Mil	Shielded Control	600V	22-23
XLPE/CPE 3Mil	Shielded Control	600V	24-25
FR-EP/CPE 3Mil	Shielded Control	600V	26-27
XLPE/PVC 3Mil	Shielded Control	600V	28-29
XLPE/LSZH 3Mil	Shielded Control	600V	30-31
XLPE/X-Link 3Mil	Shielded Control	600V	32-33
XLPE/CPE 5Mil	Shielded Control	600V	34-35
FR-EP/CPE 5Mil	Shielded Control	600V	36-37
XLPE/PVC 5Mil	Shielded Control	600V	38-39
XLPE/LSZH 5Mil	Shielded Control	600V	40-41
XLPE/X-Link 5Mil	Shielded Control	600V	42-43
XLPE/CPE 5Mil LCS	Shielded Control	600V	44-45
FR-EP/CPE 5Mil LCS	Shielded Control	600V	46-47
XLPE/PVC 5Mil LCS	Shielded Control	600V	48-49
XLPE/LSZH 5Mil LCS	Shielded Control	600V	50-51
XLPE/X-Link 5Mil LCS	Shielded Control	600V	52-53
Notes			54-55

## Belden XLPE/CPE Unshielded Series

### 600 V Unshielded, XLPE-CPE Substation Control Cable



UL 1277 TC-ER XLPE/CPE  
FT4/1202

#### Operating Temperature

90°C Wet/Dry  
-40° Cold Bend

#### Conductor Color Coding

ICEA S-73-532 TABLE E2 - 10 AWG AND SMALLER

ICEA S-73-532 TABLE M4 - 8 AWG AND LARGER

BLACK JACKET (OTHER COLORS AVAILABLE)

#### Materials

Class B bare copper conductors  
XLPE-VW-1 insulation meeting XHHW-2  
Heat, moisture, oil and sunlight resistant  
CPE jacket

#### Ratings

UL 1277 TC-ER  
UL DIR BUR (3 Conductors or more)  
UL OIL RES I/II  
ICEA S-73-532  
ICEA S-95-658  
UL1685-FT-4/IEEE 1202  
ICEA T-29-520  
XHHW-2 VW-1 Conductors  
RoHS

#### Other

Suitable for Class 1 Div 2 Hazardous locations  
Excellent Chemical, Oil and Moisture resistance  
130°C Overload Temp  
250°C Short Circuit Temp  
Rip Cord

#### Options

Tinned or Bare Strand  
Fine Strand  
Braid or Foil Shields  
Custom Colors and Print  
1000V/2000V Insulation Upgrade

#### 14 AWG with Ground + Unshielded

Stranding: Bare (7/22AWG) Color Code E2  
Insulation thickness: 0.030-XHHW-2 (0.762mm)

Part Number	Conductors	Nominal	Diameter	Jacket	Thickness	Approximate	Weight
		Inch	mm	Inch	mm	lbs/1000ft	kg/km
Q02142B	2	0.366	9.296	0.050	1.270	83	124
Q03142B	3	0.386	9.804	0.050	1.270	103	153
Q04142B	4	0.420	10.668	0.050	1.270	125	186
Q05142B	5	0.458	11.633	0.050	1.270	148	220
Q07142B	7	0.497	12.624	0.050	1.270	188	280
Q09142B	9	0.614	15.596	0.068	1.727	253	376
Q12142B	12	0.684	17.374	0.068	1.727	318	473

#### 12 AWG with Ground + Unshielded

Stranding: Bare (7/20AWG) Color Code E2  
Insulation thickness: 0.030-XHHW-2 (0.762 mm)

Part Number	Conductors	Nominal	Diameter	Jacket	Thickness	Approximate	Weight
		Inch	mm	Inch	mm	lbs/1000ft	kg/km
Q02122B	2	0.402	10.211	0.050	1.270	108	161
Q03122B	3	0.424	10.770	0.050	1.270	137	204
Q04122B	4	0.463	11.760	0.050	1.270	167	249
Q05122B	5	0.506	12.852	0.050	1.270	197	293
Q07122B	7	0.587	14.910	0.070	1.778	274	408
Q09122B	9	0.679	17.247	0.070	1.778	338	503
Q12122B	12	0.758	19.253	0.070	1.778	428	637

#### 10 AWG with Ground + Unshielded

Stranding: Bare (7/18AWG) Color Code E2  
Insulation thickness: 0.030-XHHW-2 (0.762 mm)

Part Number	Conductors	Nominal	Diameter	Jacket	Thickness	Approximate	Weight
		Inch	mm	Inch	mm	lbs/1000ft	kg/km
Q02102B	2	0.450	11.430	0.050	1.270	151	225
Q03102B	3	0.476	12.090	0.050	1.270	193	287
Q04102B	4	0.521	13.233	0.050	1.270	237	353
Q05102B	5	0.607	15.418	0.050	1.270	301	448
Q07102B	7	0.659	16.739	0.070	1.778	387	576
Q09102B	9	0.766	19.456	0.070	1.778	480	714
Q12102B	12	0.906	23.012	0.090	2.286	651	969

# Belden XLPE/CPE Unshielded Series (cont.)

## 600 V Unshielded, XLPE-CPE Substation Control Cable

### 8 AWG with Ground + Unshielded

Stranding: Bare (7/16AWG) Color Code M4  
 Insulation thickness: 0.045-XHHW-2 (1.143 mm)

Part Number	Conductors	Nominal	Diameter	Jacket	Thickness	Approximate	Weight
		Inch	mm	Inch	mm	lbs/1000ft	kg/km
Q02084B	2	0.604	15.342	0.070	1.778	234	348
Q03084B	3	0.639	16.231	0.070	1.778	305	454
Q04084B	4	0.699	17.755	0.070	1.778	379	564

### 6 AWG with Ground + Unshielded

Stranding: Bare (7/14AWG) Color Code M4  
 Insulation thickness: 0.045-XHHW-2 (1.143 mm)

Part Number	Conductors	Nominal	Diameter	Jacket	Thickness	Approximate	Weight
		Inch	mm	Inch	mm	lbs/1000ft	kg/km
Q02064B	2	0.684	17.374	0.070	1.778	332	494
Q03064B	3	0.725	18.415	0.070	1.778	437	650
Q04064B	4	0.796	20.218	0.070	1.778	547	814

### 4 AWG with Ground + Unshielded

Stranding: Bare (7/12AWG) Color Code M4  
 Insulation thickness: 0.045-XHHW-2 (1.143 mm)

Part Number	Conductors	Nominal	Diameter	Jacket	Thickness	Approximate	Weight
		Inch	mm	Inch	mm	lbs/1000ft	kg/km
Q02044B	2	0.769	19.533	0.070	1.778	443	659
Q03044B	3	0.817	20.752	0.070	1.778	601	894
Q04044B	4	0.946	24.028	0.090	2.286	802	1193

## Belden FR-EP/CPE Unshielded Series

600 V Unshielded, FR-EP/CPE Substation Control Cable



UL 1277 TC-ER EPR/CPE  
FT4/1202

### Operating Temperature

90°C Wet/Dry

-40° C Cold Bend

### Conductor Color Coding

ICEA S-73-532 TABLE E2 - 10 AWG AND SMALLER

ICEA S-73-532 TABLE M4 - 8 AWG AND LARGER

BLACK JACKET (OTHER COLORS AVAILABLE)

### Materials

Class B bare copper conductors

EPR-VW-1 insulation meeting XHHW-2 (EPCV)

Heat, moisture, oil and sunlight resistant CPE jacket

### Ratings

UL 1277 TC-ER

UL DIR BUR (3Conductors or more)

UL OIL RES I/II

ICEA S-73-532

ICEA S-95-658

UL1685-FT-4/IEEE 1202

ICEA T-29-520

XHHW-2 VW-1 Conductors UL EPCV (EPR)

RoHS

### Other

Suitable for Class 1 Div 2 Hazardous locations

Excellent Chemical, Oil and Moisture resistance

130°C Overload Temp

250°C Short Circuit Temp

Rip Cord

### Options

Tinned or Bare Strand

Fine Strand

Braid or Foil Shields

Custom Colors and Print

1000V/2000V Insulation Upgrade

### 14 AWG with Ground + Unshielded

Stranding: Bare (7/22AWG) Color Code: E2  
Insulation thickness: 0.030-XHHW-2 (0.762mm)

Part Number	Conductors	Nominal	Diameter	Jacket	Thickness	Approximate	Weight
		Inch	mm	Inch	mm	lbs/1000ft	kg/km
002142B	2	0.366	9.296	0.050	1.270	83	124
003142B	3	0.386	9.804	0.050	1.270	103	153
004142B	4	0.420	10.668	0.050	1.270	125	186
005142B	5	0.458	11.633	0.050	1.270	148	220
007142B	7	0.497	12.624	0.050	1.270	188	280
009142B	9	0.614	15.596	0.068	1.727	253	376
012142B	12	0.684	17.374	0.068	1.727	318	473

### 12 AWG with Ground + Unshielded

Stranding: Bare (7/20AWG) Color Code: E2  
Insulation thickness: 0.030-XHHW-2 (0.762mm)

Part Number	Conductors	Nominal	Diameter	Jacket	Thickness	Approximate	Weight
		Inch	mm	Inch	mm	lbs/1000ft	kg/km
002122B	2	0.402	10.211	0.050	1.270	108	161
003122B	3	0.424	10.770	0.050	1.270	137	204
004122B	4	0.463	11.760	0.050	1.270	167	249
005122B	5	0.506	12.852	0.050	1.270	197	293
007122B	7	0.587	14.910	0.068	1.727	274	408
009122B	9	0.679	17.247	0.068	1.727	338	503
012122B	12	0.758	19.253	0.068	1.727	428	637

### 10 AWG with Ground + Unshielded

Stranding: Bare (7/18AWG) Color Code: E2  
Insulation thickness: 0.030-XHHW-2 (0.762mm)

Part Number	Conductors	Nominal	Diameter	Jacket	Thickness	Approximate	Weight
		Inch	mm	Inch	mm	lbs/1000ft	kg/km
002102B	2	0.450	11.430	0.050	1.270	151	225
003102B	3	0.476	12.090	0.050	1.270	193	287
004102B	4	0.521	13.233	0.050	1.270	237	353
005102B	5	0.607	15.418	0.050	1.270	301	448
007102B	7	0.659	16.739	0.070	1.778	387	576
009102B	9	0.766	19.456	0.070	1.778	480	714
012102B	12	0.906	23.012	0.090	2.286	651	969

# Belden FR-EP/CPE Unshielded Series (cont.)

## 600 V Unshielded, FR-EP/CPE Substation Control Cable

### 8 AWG with Ground + Unshielded

Stranding: Bare (7x16AWG) Color Code: M4  
 Insulation thickness: 0.045-XHHW-2 (1.143mm)

Part Number	Conductors	Nominal	Diameter	Jacket	Thickness	Approximate	Weight
		Inch	mm	Inch	mm	lbs/1000ft	kg/km
002084B	2	0.604	15.342	0.070	1.778	234	348
003084B	3	0.639	16.231	0.070	1.778	305	454
004084B	4	0.699	17.755	0.070	1.778	379	564

### 6 AWG with Ground + Unshielded

Stranding: Bare (7x14AWG) Color Code: M4  
 Insulation thickness: 0.045-XHHW-2 (1.143mm)

Part Number	Conductors	Nominal	Diameter	Jacket	Thickness	Approximate	Weight
		Inch	mm	Inch	mm	lbs/1000ft	kg/km
002064B	2	0.684	17.374	0.070	1.778	332	494
003064B	3	0.725	18.415	0.070	1.778	437	650
004064B	4	0.796	20.218	0.070	1.778	547	814

### 4 AWG with Ground + Unshielded

Stranding: Bare (7x12AWG) Color Code: M4  
 Insulation thickness: 0.045-XHHW-2 (1.143mm)

Part Number	Conductors	Nominal	Diameter	Jacket	Thickness	Approximate	Weight
		Inch	mm	Inch	mm	lbs/1000ft	kg/km
002044B	2	0.769	19.533	0.070	1.778	443	659
003044B	3	0.817	20.752	0.070	1.778	601	894
004044B	4	0.946	24.028	0.090	2.286	802	1193

## Belden XLPE/PVC Unshielded Series

### 600 V Unshielded, XLPE-PVC Substation Control Cable



UL 1277 TC-ER XLPE/PVC  
FT4/1202

#### Operating Temperature

90°C Wet/Dry

#### Conductor Color Coding

ICEA S-73-532 TABLE E2 - 10 AWG AND SMALLER

ICEA S-73-532 TABLE M4 - 8 AWG AND LARGER

BLACK JACKET (OTHER COLORS AVAILABLE)

#### Materials

Class B bare copper conductors

XLPE-VW-1 insulation meeting XHHW-2

Heat, moisture, oil and sunlight resistant PVC jacket

#### Ratings

UL 1277 TC-ER

UL DIR BUR (3 Conductors or more)

ICEA S-73-532

ICEA S-95-658

UL1685-FT-4/IEEE 1202

ICEA T-29-520

XHHW-2 VW-1 Conductors

RoHS

#### Other

Suitable for Class 1 Div 2 Hazardous locations

Excellent Chemical, and Moisture resistance

130°C Overload Temp

250°C Short Circuit Temp

Rip Cord

#### Options

Tinned or Bare Strand

Fine Strand

Braid or Foil Shields

Custom Colors and Print

1000V/2000V Insulation Upgrade

#### 14 AWG with Ground + Unshielded

Stranding: Bare (7/22AWG) Color Code: E2  
Insulation thickness: 0.030-XHHW-2 (0.762mm)

Part Number	Conductors	Nominal	Diameter	Jacket	Thickness	Approximate	Weight
		Inch	mm	Inch	mm	lbs/1000ft	kg/km
C02142G	2	0.356	9.042	0.047	1.194	78	116
C03142G	3	0.376	9.550	0.047	1.194	98	146
C04142G	4	0.410	10.414	0.047	1.194	120	179
C05142G	5	0.448	11.379	0.047	1.194	141	210
C07142G	7	0.487	12.370	0.047	1.194	181	269
C09142G	9	0.598	15.189	0.062	1.575	240	357
C12142G	12	0.668	16.967	0.062	1.575	304	452

#### 12 AWG with Ground + Unshielded

Stranding: Bare (7/20AWG) Color Code: E2  
Insulation thickness: 0.030-XHHW-2 (0.762mm)

Part Number	Conductors	Nominal	Diameter	Jacket	Thickness	Approximate	Weight
		Inch	mm	Inch	mm	lbs/1000ft	kg/km
C02122G	2	0.392	9.957	0.047	1.194	103	153
C03122G	3	0.414	10.516	0.047	1.194	131	195
C04122G	4	0.453	11.506	0.047	1.194	161	240
C05122G	5	0.496	12.598	0.047	1.194	190	283
C07122G	7	0.571	14.503	0.062	1.575	262	390
C09122G	9	0.663	16.840	0.062	1.575	324	482
C12122G	12	0.742	18.847	0.062	1.575	412	613

#### 10 AWG with Ground + Unshielded

Stranding: Bare (7/18AWG) Color Code: E2  
Insulation thickness: 0.045-XHHW-2 (1.143mm)

Part Number	Conductors	Nominal	Diameter	Jacket	Thickness	Approximate	Weight
		Inch	mm	Inch	mm	lbs/1000ft	kg/km
C02102G	2	0.440	11.176	0.047	1.194	145	216
C03102G	3	0.466	11.836	0.047	1.194	187	278
C04102G	4	0.511	12.979	0.047	1.194	230	342
C05102G	5	0.591	15.011	0.062	1.575	289	430
C07102G	7	0.643	16.332	0.062	1.575	374	557
C09102G	9	0.750	19.050	0.062	1.575	465	692
C12102G	12	0.886	22.504	0.084	2.134	627	933



# Belden XLPE/PVC Unshielded Series (cont.)

## 600 V Unshielded, XLPE-PVC Substation Control Cable

### 8 AWG with Ground + Unshielded

Stranding: Bare (7/16AWG) Color Code: M4  
 Insulation thickness: 0.045-XHHW-2 (1.143mm)

Part Number	Conductors	Nominal	Diameter	Jacket	Thickness	Approximate	Weight
		Inch	mm	Inch	mm	lbs/1000ft	kg/km
C02084G	2	0.588	14.935	0.062	1.575	222	330
C03084G	3	0.623	15.824	0.602	15.291	292	435
C04084G	4	0.683	17.348	0.062	1.575	364	542

### 6 AWG with Ground + Unshielded

Stranding: Bare (7/14AWG) Color Code: M4  
 Insulation thickness: 0.045-XHHW-2 (1.143mm)

Part Number	Conductors	Nominal	Diameter	Jacket	Thickness	Approximate	Weight
		Inch	mm	Inch	mm	lbs/1000ft	kg/km
C02064G	2	0.688	17.475	0.062	1.575	318	473
C03064G	3	0.709	18.009	0.062	1.575	423	629
C04064G	4	0.780	19.812	0.062	1.575	531	790

### 4 AWG with Ground + Unshielded

Stranding: Bare (7/12AWG) Color Code: M4  
 Insulation thickness: 0.045-XHHW-2 (1.143mm)

Part Number	Conductors	Nominal	Diameter	Jacket	Thickness	Approximate	Weight
		Inch	mm	Inch	mm	lbs/1000ft	kg/km
C02044G	2	0.753	19.126	0.062	1.575	433	644
C03044G	3	0.801	20.345	0.062	1.575	592	881
C04044G	4	0.926	23.520	0.084	2.134	789	1174

## Belden XLPE/LSZH Unshielded Series

600 V Unshielded, XLPE-LSZH Substation Control Cable



UL 1277 TC-ER XLPE/LZH  
FT4/1202/NFPA 130

### Operating Temperature

-30 to 90°C Wet/Dry

### Conductor Color Coding

ICEA S-73-532 TABLE E2 - 10 AWG AND SMALLER

ICEA S-73-532 TABLE M4 - 8 AWG AND LARGER

BLACK JACKET (OTHER COLORS AVAILABLE)

### Materials

Class B bare copper conductors

XLPE-VW-1 insulation meeting XHHW-2

Heat, moisture, oil and sunlight resistant LSZH jacket

### Ratings

UL 1277 TC-ER

UL DIR BUR (3 Conductors or more)

ICEA S-73-532

ICEA S-95-658

XHHW-2 VW-1 Conductors

RoHS

TC-LS

NFPA 130 Compliance

FT4/IEEE1202

### Other

Suitable for Class 1 Div 2 Hazardous locations

Excellent Chemical, and Moisture resistance

130°C Overload Temp

250°C Short Circuit Temp

Rip Cord

### Options

Tinned or Bare Strand

Fine Strand

Braid or Foil Shields

Custom Colors and Print

1000V/2000V Insulation Upgrade

### 14 AWG with Ground + Unshielded

Stranding: Bare (7/22AWG) Color Code: E2  
Insulation thickness: 0.030-XHHW-2 (0.762mm)

Part Number	Conductors	Nominal	Diameter	Jacket	Thickness	Approximate	Weight
		Inch	mm	Inch	mm	lbs/1000ft	kg/km
S02142G	2	0.356	9.042	0.047	1.194	82	122
S03142G	3	0.376	9.550	0.047	1.194	102	152
S04142G	4	0.410	10.414	0.047	1.194	124	185
S05142G	5	0.448	11.379	0.047	1.194	146	217
S07142G	7	0.487	12.370	0.047	1.194	187	278
S09142G	9	0.598	15.189	0.062	1.575	249	371
S12142G	12	0.668	16.967	0.062	1.575	314	467

### 12 AWG with Ground + Unshielded

Stranding: Bare (7/20AWG) Color Code: E2  
Insulation thickness: 0.030-XHHW-2 (0.762mm)

Part Number	Conductors	Nominal	Diameter	Jacket	Thickness	Approximate	Weight
		Inch	mm	Inch	mm	lbs/1000ft	kg/km
S02122G	2	0.392	9.957	0.047	1.194	107	159
S03122G	3	0.414	10.516	0.047	1.194	136	202
S04122G	4	0.453	11.506	0.047	1.194	166	247
S05122G	5	0.496	12.598	0.047	1.194	196	292
S07122G	7	0.571	14.503	0.062	1.575	270	402
S09122G	9	0.663	16.840	0.062	1.575	334	497
S12122G	12	0.742	18.847	0.062	1.575	423	629

### 10 AWG with Ground + Unshielded

Stranding: Bare (7/18AWG) Color Code: E2  
Insulation thickness: 0.030-XHHW-2 (0.762mm)

Part Number	Conductors	Nominal	Diameter	Jacket	Thickness	Approximate	Weight
		Inch	mm	Inch	mm	lbs/1000ft	kg/km
S02102G	2	0.440	11.176	0.047	1.194	150	223
S03102G	3	0.466	11.836	0.047	1.194	192	286
S04102G	4	0.511	12.979	0.047	1.194	236	351
S05102G	5	0.591	15.011	0.062	1.575	298	443
S07102G	7	0.643	16.332	0.062	1.575	384	571
S09102G	9	0.750	19.050	0.062	1.575	476	708
S12102G	12	0.886	22.504	0.084	2.134	645	960

# Belden XLPE/LSZH Unshielded Series (cont.)

## 600 V Unshielded, XLPE-LSZH Substation Control Cable

### 8 AWG with Ground + Unshielded

Stranding: Bare (7/16AWG) Color Code: M4  
 Insulation thickness: 0.045-XHHW-2 (1.143mm)

Part Number	Conductors	Nominal	Diameter	Jacket	Thickness	Approximate	Weight
		Inch	mm	Inch	mm	lbs/1000ft	kg/km
S02084G	2	0.588	14.935	0.062	1.575	231	344
S03084G	3	0.623	15.824	0.062	1.575	301	448
S04084G	4	0.683	17.348	0.062	1.575	375	558

### 6 AWG with Ground + Unshielded

Stranding: Bare (7/14AWG) Color Code: M4  
 Insulation thickness: 0.045-XHHW-2 (1.143mm)

Part Number	Conductors	Nominal	Diameter	Jacket	Thickness	Approximate	Weight
		Inch	mm	Inch	mm	lbs/1000ft	kg/km
S02064G	2	0.668	16.967	0.062	1.575	328	488
S03064G	3	0.709	18.009	0.062	1.575	433	644
S04064G	4	0.780	19.812	0.062	1.575	543	808

### 4 AWG with Ground + Unshielded

Stranding: Bare (7/12AWG) Color Code: M4  
 Insulation thickness: 0.045-XHHW-2 (1.143mm)

Part Number	Conductors	Nominal	Diameter	Jacket	Thickness	Approximate	Weight
		Inch	mm	Inch	mm	lbs/1000ft	kg/km
S02044G	2	0.753	19.126	0.062	1.575	439	653
S03044G	3	0.801	20.345	0.062	1.575	596	887
S04044G	4	0.926	23.520	0.084	2.134	797	1186

# Belden XLPE/XL-LSZH X-Link Unshielded Series

600 V Unshielded, XLPE-X-Link Substation Control Cable



UL 1277 TC-ER XLPE/XL-LSZH  
FT4/1202

### Operating Temperature

-40 to 90°C Wet/Dry

### Conductor Color Coding

ICEA S-73-532 TABLE E2 - 10 AWG AND SMALLER

ICEA S-73-532 TABLE M4 - 8 AWG AND LARGER

BLACK JACKET (OTHER COLORS AVAILABLE)

### Materials

Class B bare copper conductors

XLPE-VW-1 insulation meeting XHHW-2

Heat, moisture, oil and sunlight resistant  
Thermoset LSZH jacket

### Ratings

UL 1277 TC-ER

UL DIR BUR (3 Conductors or more)

UL OIL RES I/II

ICEA S-73-532

UL1685-FT-4/IEEE 1202

ICEA S T-29-520

XHHW-2 VW-1 Conductors

RoHS

### Other

Suitable for Class 1 Div 2 Hazardous locations

Excellent Chemical, Oil and Moisture resistance

130°C Overload Temp

250°C Short Circuit Temp

Rip Cord

### Options

Tinned or Bare Strand

Fine Strand

Braid or Foil Shields

Custom Colors and Print

1000V/2000V Insulation Upgrade

### 14 AWG with Ground + Unshielded

Stranding: Bare (7/22AWG) Color Code: E2  
Insulation thickness: 0.030-XHHW-2 (0.762mm)

Part Number	Conductors	Nominal	Diameter	Jacket	Thickness	Approximate	Weight
		Inch	mm	Inch	mm	lbs/1000ft	kg/km
Y02142G	2	0.356	9.042	0.047	1.194	84	125
Y03142G	3	0.376	9.550	0.047	1.194	105	156
Y04142G	4	0.410	10.414	0.047	1.194	127	189
Y05142G	5	0.448	11.379	0.047	1.194	149	222
Y07142G	7	0.487	12.370	0.047	1.194	190	283
Y09142G	9	0.598	15.189	0.062	1.575	255	379
Y12142G	12	0.668	16.967	0.062	1.575	320	476

### 12 AWG with Ground + Unshielded

Stranding: Bare (7/20AWG) Color Code: E2  
Insulation thickness: 0.030-XHHW-2 (0.762mm)

Part Number	Conductors	Nominal	Diameter	Jacket	Thickness	Approximate	Weight
		Inch	mm	Inch	mm	lbs/1000ft	kg/km
Y02122G	2	0.392	9.957	0.047	1.194	110	164
Y03122G	3	0.414	10.516	0.047	1.194	138	205
Y04122G	4	0.453	11.506	0.047	1.194	169	251
Y05122G	5	0.496	12.598	0.047	1.194	200	298
Y07122G	7	0.571	14.503	0.062	1.575	275	409
Y09122G	9	0.663	16.840	0.062	1.575	340	506
Y12122G	12	0.742	18.847	0.062	1.575	430	640

### 10 AWG with Ground + Unshielded

Stranding: Bare (7/18AWG) Color Code: E2  
Insulation thickness: 0.030-XHHW-2 (0.762mm)

Part Number	Conductors	Nominal	Diameter	Jacket	Thickness	Approximate	Weight
		Inch	mm	Inch	mm	lbs/1000ft	kg/km
Y02102G	2	0.440	11.176	0.047	1.194	153	228
Y03102G	3	0.466	11.836	0.047	1.194	195	290
Y04102G	4	0.511	12.979	0.047	1.194	239	356
Y05102G	5	0.591	15.011	0.062	1.575	303	451
Y07102G	7	0.643	16.332	0.062	1.575	389	579
Y09102G	9	0.750	19.050	0.062	1.575	483	719
Y12102G	12	0.886	22.504	0.084	2.134	656	976

# Belden XLPE/XL-LSZH X-Link Unshielded Series (cont.)

600 V Unshielded, XLPE-X-Link Substation Control Cable

## 8 AWG with Ground + Unshielded

Stranding: Bare (7/16AWG) Color Code: M4  
Insulation thickness: 0.045-XHHW-2 (1.143mm)

Part Number	Conductors	Nominal	Diameter	Jacket	Thickness	Approximate	Weight
		Inch	mm	Inch	mm	lbs/1000ft	kg/km
Y02084G	2	0.588	14.935	0.062	1.575	236	351
Y03084G	3	0.623	15.824	0.062	1.575	307	457
Y04084G	4	0.683	17.348	0.062	1.575	381	567

## 6 AWG with Ground + Unshielded

Stranding: Bare (7/14AWG) Color Code: M4  
Insulation thickness: 0.045-XHHW-2 (1.143mm)

Part Number	Conductors	Nominal	Diameter	Jacket	Thickness	Approximate	Weight
		Inch	mm	Inch	mm	lbs/1000ft	kg/km
Y02064G	2	0.668	16.967	0.062	1.575	334	497
Y03064G	3	0.709	18.009	0.062	1.575	440	655
Y04064G	4	0.780	19.812	0.062	1.575	550	818

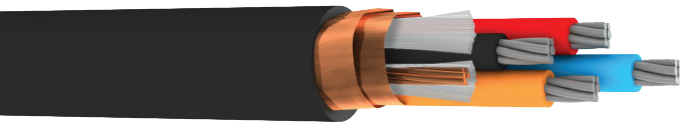
## 4 AWG with Ground + Unshielded

Stranding: Bare (7/12AWG) Color Code: M4  
Insulation thickness: 0.045-XHHW-2 (1.143mm)

Part Number	Conductors	Nominal	Diameter	Jacket	Thickness	Approximate	Weight
		Inch	mm	Inch	mm	lbs/1000ft	kg/km
Y02044G	2	0.753	19.126	0.062	1.575	446	664
Y03044G	3	0.801	20.345	0.062	1.575	604	899
Y04044G	4	0.926	23.520	0.084	2.134	808	1202

## Belden XLPE/CPE 2x2Mil Helical Copper Tape Series

600 V Shielded, XLPE-CPE Substation Control Cable



2x2 Mil Copper tape shields provide superior resistance to shield cracking during installation and handling, providing more effective installed performance

UL 1277 TC-ER XLPE/CPE FT4/1202

### Operating Temperature

90°C Wet/Dry

-40° Cold Bend

### Conductor Color Coding

ICEA S-73-532 TABLE E2 - 10 AWG AND SMALLER

ICEA S-73-532 TABLE M4 - 8 AWG AND LARGER

BLACK JACKET (OTHER COLORS AVAILABLE)

### Materials

Class B tinned copper conductors

XLPE-VW-1 insulation meeting XHHW-2

Heat, moisture, oil and sunlight resistant CPE jacket

### Ratings

UL 1277 TC-ER

UL DIR BUR (3 Conductors or more)

UL OIL RES I/II

ICEA S-73-532

ICEA S-95-658

UL1685-FT-4/IEEE 1202

ICEA S T-29-520

XHHW-2 VW-1 Conductors

RoHS

### Other

Suitable for Class 1 Div 2 Hazardous locations

Excellent Chemical, Oil and Moisture resistance

130°C Overload Temp

250°C Short Circuit Temp

2 Copper tapes of 0.002" for superior crack resistance and flexibility

### Options

Tinned or Bare Strand

Fine Strand

1000V/2000V Insulation Upgrade

### 14 AWG with Ground + 2 x 2 Mil Helical Copper Shield

Stranding: Tinned 7/22AWG Color Code: E2  
Insulation thickness: 0.030-XHHW-2 (0.762mm)

Part Number	Conductors	Nominal	Diameter	Jacket	Thickness	Approximate	Weight
		Inch	mm	Inch	mm	lbs/1000ft	kg/km
R0214ZB	2	0.378	9.601	0.050	1.270	103	153
R0314ZB	3	0.398	10.109	0.050	1.270	125	186
R0414ZB	4	0.432	10.973	0.050	1.270	149	222
R0514ZB	5	0.470	11.938	0.050	1.270	174	259
R0714ZB	7	0.509	12.929	0.050	1.270	217	323
R0914ZB	9	0.626	15.900	0.070	1.778	288	429
R1214ZB	12	0.696	17.678	0.070	1.778	358	533

### 12 AWG with Ground + 2 x 2 Mil Helical Copper Shield

Stranding: Tinned 7/20AWG Color Code: E2  
Insulation thickness: 0.030-XHHW-2 (0.762mm)

Part Number	Conductors	Nominal	Diameter	Jacket	Thickness	Approximate	Weight
		Inch	mm	Inch	mm	lbs/1000ft	kg/km
R0212ZB	2	0.414	10.516	0.050	1.270	130	193
R0312ZB	3	0.436	11.074	0.050	1.270	160	238
R0412ZB	4	0.475	12.065	0.050	1.270	193	287
R0512ZB	5	0.518	13.157	0.050	1.270	227	338
R0712ZB	7	0.599	15.215	0.070	1.778	307	457
R0912ZB	9	0.691	17.551	0.070	1.778	378	563
R1212ZB	12	0.770	19.558	0.070	1.778	473	704

### 10 AWG with Ground + 2 x 2 Mil Helical Copper Shield

Stranding: Tinned 7/18AWG Color Code: E2  
Insulation thickness: 0.030-XHHW-2 (0.762mm)

Part Number	Conductors	Nominal	Diameter	Jacket	Thickness	Approximate	Weight
		Inch	mm	Inch	mm	lbs/1000ft	kg/km
R0210ZB	2	0.462	11.735	0.050	1.270	176	262
R0310ZB	3	0.488	12.395	0.050	1.270	221	329
R0410ZB	4	0.569	14.453	0.070	1.778	286	426
R0510ZB	5	0.619	15.723	0.070	1.778	336	500
R0710ZB	7	0.671	17.043	0.070	1.778	426	634
R0910ZB	9	0.778	19.761	0.070	1.778	526	783
R1210ZB	12	0.918	23.317	0.090	2.286	704	1048

# Belden XLPE/CPE 2x2Mil Helical Copper Tape Series (cont.)

600 V Shielded, XLPE-CPE Substation Control Cable

## 8 AWG with Ground + 2 x 2 Mil Helical Copper Shield

Stranding: Tinned 7/16AWG Color Code: M4  
Insulation thickness: 0.045-XHHW-2 (1.143 mm)

Part Number	Conductors	Nominal	Diameter	Jacket	Thickness	Approximate	Weight
		Inch	mm	Inch	mm	lbs/1000ft	kg/km
R02083B	2	0.616	15.646	0.070	1.778	269	400
R03083B	3	0.651	16.535	0.070	1.778	342	509
R04083B	4	0.711	18.059	0.070	1.778	420	625

## 6 AWG with Ground + 2 x 2 Mil Helical Copper Shield

Stranding: Tinned 7/14AWG Color Code: M4  
Insulation thickness: 0.045-XHHW-2 (1.143 mm)

Part Number	Conductors	Nominal	Diameter	Jacket	Thickness	Approximate	Weight
		Inch	mm	Inch	mm	lbs/1000ft	kg/km
R02063B	2	0.696	17.678	0.070	1.778	372	554
R03063B	3	0.737	18.720	0.070	1.778	481	716
R04063B	4	0.808	20.523	0.070	1.778	595	885

## 4 AWG with Ground + 2 x 2 Mil Helical Copper Shield

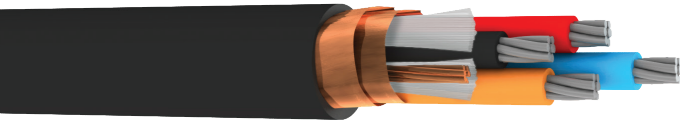
Stranding: Tinned 7/12 AWG Color Code: M4  
Insulation thickness: 0.045-XHHW-2 (1.143 mm)

Part Number	Conductors	Nominal	Diameter	Jacket	Thickness	Approximate	Weight
		Inch	mm	Inch	mm	lbs/1000ft	kg/km
R02043B	2	0.781	19.837	0.070	1.778	489	728
R03043B	3	0.829	21.057	0.070	1.778	650	967
R04043B	4	0.958	24.333	0.090	2.286	858	1277

Belden recommends 2x2 mil copper tape for the best installed performance. 2x2 mil shielding tapes with 33% overlap resist cracking, buckling and opening that can occur in 5 mil tapes during the normal process of installation and handling. 2x2 tapes improve cable flexibility and shield reliability while providing more surface area to effectively handle any high frequency shield currents and noise without compromising reliability or performance.

# Belden FR-EP/CPE 2x2Mil Helical Copper Tape Series

600 V Shielded, FR-EP/CPE Substation Control Cable



2x2 Mil Copper tape shields provide superior resistance to shield cracking during installation and handling, providing more effective installed performance

UL 1277 TC-ER EPR/CPE  
FT4/1202

### Operating Temperature

90°C Wet/Dry  
-40° Cold Bend

### Conductor Color Coding

ICEA S-73-532 TABLE E2 - 10 AWG AND SMALLER

ICEA S-73-532 TABLE M4 - 8 AWG AND LARGER

BLACK JACKET (OTHER COLORS AVAILABLE)

### Materials

Class B tinned copper conductors  
EPR-VW-1 insulation meeting XHHW-2  
Heat, moisture, oil and sunlight resistant  
CPE jacket

### Ratings

UL 1277 TC-ER  
UL DIR BUR (3 Conductors or more)  
UL OIL RES I/II  
ICEA S-73-532  
ICEA S-95-658  
UL1685-FT-4/IEEE 1202  
ICEA S T-29-520  
XHHW-2 VW-1 Conductors  
RoHS

### Other

Suitable for Class 1 Div 2 Hazardous locations  
Excellent Chemical, Oil and Moisture resistance  
130°C Overload Temp  
250°C Short Circuit Temp  
2 Copper tapes of 0.002" for superior crack resistance and flexibility

### Options

Tinned or Bare Strand  
Fine Strand  
1000V/2000V Insulation Upgrade

#### 14 AWG with Ground + 2 x 2 Mil Helical Copper Shield

Stranding: Tinned (7/22AWG) Color Code: E2  
Insulation thickness: 0.030-XHHW-2 (0.762mm)

Part Number	Conductors	Nominal	Diameter	Jacket	Thickness	Approximate	Weight
		Inch	mm	Inch	mm	lbs/1000ft	kg/km
P0214ZB	2	0.378	9.601	0.050	1.270	103	153
P0314ZB	3	0.398	10.109	0.050	1.270	125	186
P0414ZB	4	0.432	10.973	0.050	1.270	149	222
P0514ZB	5	0.470	11.938	0.050	1.270	174	259
P0714ZB	7	0.509	12.929	0.050	1.270	217	323
P0914ZB	9	0.626	15.900	0.070	1.778	288	429
P1214ZB	12	0.696	17.678	0.070	1.778	358	533

#### 12 AWG with Ground + 2 x 2 Mil Helical Copper Shield

Stranding: Tinned (7/20AWG) Color Code: E2  
Insulation thickness: 0.030-XHHW-2 (0.762mm)

Part Number	Conductors	Nominal	Diameter	Jacket	Thickness	Approximate	Weight
		Inch	mm	Inch	mm	lbs/1000ft	kg/km
P0212ZB	2	0.414	10.516	0.050	1.270	130	193
P0312ZB	3	0.436	11.074	0.050	1.270	160	238
P0412ZB	4	0.475	12.065	0.050	1.270	193	287
P0512ZB	5	0.518	13.157	0.050	1.270	227	338
P0712ZB	7	0.599	15.215	0.070	1.778	307	457
P0912ZB	9	0.691	17.551	0.070	1.778	378	563
P1212ZB	12	0.770	19.558	0.070	1.778	473	704

#### 10 AWG with Ground + 2 x 2 Mil Helical Copper Shield

Stranding: Tinned (7/18AWG) Color Code: E2  
Insulation thickness: 0.030-XHHW-2 (0.762mm)

Part Number	Conductors	Nominal	Diameter	Jacket	Thickness	Approximate	Weight
		Inch	mm	Inch	mm	lbs/1000ft	kg/km
P0210ZB	2	0.462	11.735	0.050	1.270	176	262
P0310ZB	3	0.488	12.395	0.050	1.270	221	329
P0410ZB	4	0.569	14.453	0.070	1.778	286	426
P0510ZB	5	0.619	15.723	0.070	1.778	336	500
P0710ZB	7	0.671	17.043	0.070	1.778	426	634
P0910ZB	9	0.778	19.761	0.070	1.778	526	783
P1210ZB	12	0.918	23.317	0.090	2.286	704	1048



# Belden FR-EP/CPE 2x2Mil Helical Copper Tape Series (cont.)

600 V Shielded, FR-EP/CPE Substation Control Cable

## 8 AWG with Ground + 2 x 2 Mil Helical Copper Shield

Stranding: Tinned (7/16AWG) Color Code: M4  
Insulation thickness: 0.045-XHHW-2 (1.143mm)

Part Number	Conductors	Nominal	Diameter	Jacket	Thickness	Approximate	Weight
		Inch	mm	Inch	mm	lbs/1000ft	kg/km
P02083B	2	0.616	15.646	0.070	1.778	269	400
P03083B	3	0.651	16.535	0.070	1.778	342	509
P04083B	4	0.711	18.059	0.070	1.778	420	625

## 6 AWG with Ground + 2 x 2 Mil Helical Copper Shield

Stranding: Tinned (7/14AWG) Color Code: M4  
Insulation thickness: 0.045-XHHW-2 (1.143mm)

Part Number	Conductors	Nominal	Diameter	Jacket	Thickness	Approximate	Weight
		Inch	mm	Inch	mm	lbs/1000ft	kg/km
P02063B	2	0.696	17.678	0.070	1.778	372	554
P03063B	3	0.737	18.720	0.070	1.778	481	716
P04063B	4	0.808	20.523	0.070	1.778	595	885

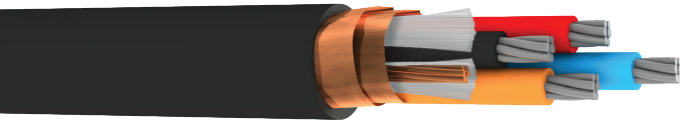
## 4 AWG with Ground + 2 x 2 Mil Helical Copper Shield

Stranding: Tinned (7/12AWG) Color Code: M4  
Insulation thickness: 0.045-XHHW-2 (1.143mm)

Part Number	Conductors	Nominal	Diameter	Jacket	Thickness	Approximate	Weight
		Inch	mm	Inch	mm	lbs/1000ft	kg/km
P02043B	2	0.781	19.837	0.070	1.778	489	728
P03043B	3	0.829	21.057	0.070	1.778	650	967
P04043B	4	0.958	24.333	0.090	2.286	858	1277

## Belden XLPE/PVC 2x2Mil Helical Copper Tape Series

600 V Shielded, XLPE-PVC Substation Control Cable



2x2 Mil Copper tape shields provide superior resistance to shield cracking during installation and handling, providing more effective installed performance

UL 1277 TC-ER XLPE/PVC FT4/1202

### Operating Temperature

-30 to 90°C Wet/Dry

### Conductor Color Coding

ICEA S-73-532 TABLE E2 - 10 AWG AND SMALLER

ICEA S-73-532 TABLE M4 - 8 AWG AND LARGER

BLACK JACKET (OTHER COLORS AVAILABLE)

### Materials

Class B tinned copper conductors  
XLPE-VW-1 insulation meeting XHHW-2 Heat, moisture, oil and sunlight resistant PVC jacket

### Ratings

UL 1277 TC-ER  
UL DIR BUR (3 Conductors or more)  
ICEA S-73-532  
ICEA S-95-658  
UL 1685-FT-4/IEEE 1202  
ICEA S T-29-520  
XHHW-2 VW-1 Conductors  
RoHS

### Other

Suitable for Class 1 Div 2 Hazardous locations  
Excellent Chemical, Oil and Moisture resistance  
130°C Overload Temp  
250°C Short Circuit Temp  
2 Copper tapes of 0.002" for superior crack resistance and flexibility

### Options

Tinned or Bare Strand  
Fine Strand  
1000V/2000V Insulation Upgrade

### 14 AWG with Ground + 2x2Mil Helical Copper Shield

Stranding: Tinned (7/22AWG) Color Code: E2  
Insulation thickness: 0.030-XHHW-2 (0.762mm)

Part Number	Conductors	Nominal	Diameter	Jacket	Thickness	Approximate	Weight
		Inch	mm	Inch	mm	lbs/1000ft	kg/km
D0214ZG	2	0.368	9.347	0.047	1.194	100	149
D0314ZG	3	0.388	9.855	0.047	1.194	122	182
D0414ZG	4	0.422	10.719	0.047	1.194	146	217
D0514ZG	5	0.460	11.684	0.047	1.194	171	254
D0714ZG	7	0.499	12.675	0.047	1.194	214	318
D0914ZG	9	0.610	15.494	0.062	1.575	281	418
D1214ZG	12	0.680	17.272	0.062	1.575	350	521

### 12 AWG with Ground + 2x2Mil Helical Copper Shield

Stranding: Tinned (7/20AWG) Color Code: E2  
Insulation thickness: 0.030-XHHW-2 (0.762mm)

Part Number	Conductors	Nominal	Diameter	Jacket	Thickness	Approximate	Weight
		Inch	mm	Inch	mm	lbs/1000ft	kg/km
D0212ZG	2	0.404	10.262	0.047	1.194	128	190
D0312ZG	3	0.426	10.820	0.047	1.194	158	235
D0412ZG	4	0.465	11.811	0.047	1.194	190	283
D0512ZG	5	0.508	12.903	0.047	1.194	224	333
D0712ZG	7	0.583	14.808	0.062	1.575	300	446
D0912ZG	9	0.675	17.145	0.062	1.575	370	551
D1212ZG	12	0.754	19.152	0.062	1.575	465	692

### 10 AWG with Ground + 2x2Mil Helical Copper Shield

Stranding: Tinned (7/18AWG) Color Code: E2  
Insulation thickness: 0.030-XHHW-2 (0.762mm)

Part Number	Conductors	Nominal	Diameter	Jacket	Thickness	Approximate	Weight
		Inch	mm	Inch	mm	lbs/1000ft	kg/km
D0210ZG	2	0.452	11.481	0.047	1.194	174	259
D0310ZG	3	0.478	12.141	0.047	1.194	217	323
D0410ZG	4	0.553	14.046	0.062	1.575	280	417
D0510ZG	5	0.603	15.316	0.062	1.575	329	490
D0710ZG	7	0.655	16.637	0.062	1.575	418	622
D0910ZG	9	0.762	19.355	0.062	1.575	518	771
D1210ZG	12	0.898	22.809	0.084	2.134	692	1030

# Belden XLPE/PVC 2x2Mil Helical Copper Tape Series (cont.)

600 V Shielded, XLPE-PVC Substation Control Cable

## 8 AWG with Ground + 2x2Mil Helical Copper Shield

Stranding: Tinned (7/16AWG) Color Code: M4  
Insulation thickness: 0.045-XHHW-2 (1.143mm)

Part Number	Conductors	Nominal	Diameter	Jacket	Thickness	Approximate	Weight
		Inch	mm	Inch	mm	lbs/1000ft	kg/km
D02083G	2	0.600	15.240	0.062	1.575	262	390
D03083G	3	0.635	16.129	0.062	1.575	335	499
D04083G	4	0.695	17.653	0.062	1.575	412	613

## 6 AWG with Ground + 2x2Mil Helical Copper Shield

Stranding: Tinned (7/14AWG) Color Code: M4  
Insulation thickness: 0.045-XHHW-2 (1.143mm)

Part Number	Conductors	Nominal	Diameter	Jacket	Thickness	Approximate	Weight
		Inch	mm	Inch	mm	lbs/1000ft	kg/km
D02063G	2	0.680	17.272	0.062	1.575	364	542
D03063G	3	0.721	18.313	0.062	1.575	472	702
D04063G	4	0.792	20.117	0.062	1.575	587	874

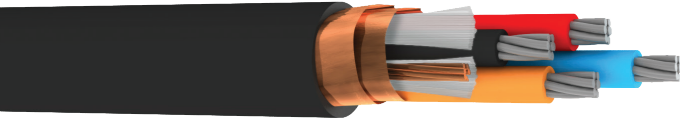
## 4 AWG with Ground + 2x2Mil Helical Copper Shield

Stranding: Tinned (7/12AWG) Color Code: M4  
Insulation thickness: 0.045-XHHW-2 (1.143mm)

Part Number	Conductors	Nominal	Diameter	Jacket	Thickness	Approximate	Weight
		Inch	mm	Inch	mm	lbs/1000ft	kg/km
D02043G	2	0.765	19.431	0.062	1.575	481	716
D03043G	3	0.813	20.650	0.062	1.575	641	954
D04043G	4	0.938	23.825	0.084	2.134	846	1259

# Belden XLPE/LSZH 2x2Mil Helical Copper Tape Series

600 V Shielded, XLPE-LSZH Substation Control Cable



2x2 Mil Copper tape shields provide superior resistance to shield cracking during installation and handling, providing more effective installed performance

UL 1277 TC-ER XLPE/LSZH  
FT4/1202/NFPA 130

### Operating Temperature

-30 to 90°C Wet/Dry

Conductor Color Coding

ICEA S-73-532 TABLE E2 - 10 AWG AND SMALLER

ICEA S-73-532 TABLE M4 - 8 AWG AND LARGER

BLACK JACKET (OTHER COLORS AVAILABLE)

### Materials

Class B tinned copper conductors

XLPE-VW-1 insulation meeting XHHW-2

Heat, moisture, oil and sunlight resistant LSZH jacket

### Ratings

UL 1277 TC-ER

UL DIR BUR (3 Conductors or more)

ICEA S-73-532

ICEA S-95-658

XHHW-2 VW-1 Conductors

RoHS

TC-LS

NFPA 130 Compliance

FT4/IEEE1202

### Other

Suitable for Class 1 Div 2 Hazardous locations

130°C Overload Temp

250°C Short Circuit Temp

2 Copper tapes of 0.002" for superior crack resistance and flexibility

### Options

Tinned or Bare Strand

Fine Strand

Braid or Foil Shields

Custom Colors and Print

1000V/2000V Insulation Upgrade

#### 14 AWG with Ground + 2x2Mil Helical Copper Shield

Stranding: Tinned (7/22AWG) Color Code: E2  
Insulation thickness: 0.030-XHHW-2 (0.762mm)

Part Number	Conductors	Nominal	Diameter	Jacket	Thickness	Approximate	Weight
		Inch	mm	Inch	mm	lbs/1000ft	kg/km
T0214ZG	2	0.368	9.347	0.047	1.194	102	152
T0314ZG	3	0.388	9.855	0.047	1.194	124	185
T0414ZG	4	0.422	10.719	0.047	1.194	148	220
T0514ZG	5	0.460	11.684	0.047	1.194	173	257
T0714ZG	7	0.499	12.675	0.047	1.194	216	321
T0914ZG	9	0.610	15.494	0.062	1.575	285	424
T1214ZG	12	0.680	17.272	0.062	1.575	354	527

#### 12 AWG with Ground + 2x2Mil Helical Copper Shield

Stranding: Tinned (7/20AWG) Color Code: E2  
Insulation thickness: 0.030-XHHW-2 (0.762mm)

Part Number	Conductors	Nominal	Diameter	Jacket	Thickness	Approximate	Weight
		Inch	mm	Inch	mm	lbs/1000ft	kg/km
T0212ZG	2	0.404	10.262	0.047	1.194	129	192
T0312ZG	3	0.426	10.820	0.047	1.194	159	237
T0412ZG	4	0.465	11.811	0.047	1.194	192	286
T0512ZG	5	0.508	12.903	0.047	1.194	226	336
T0712ZG	7	0.583	14.808	0.062	1.575	303	451
T0912ZG	9	0.675	17.145	0.062	1.575	374	557
T1212ZG	12	0.754	19.152	0.062	1.575	469	698

#### 10 AWG with Ground + 2x2Mil Helical Copper Shield

Stranding: Tinned (7/18AWG) Color Code: E2  
Insulation thickness: 0.030-XHHW-2 (0.762mm)

Part Number	Conductors	Nominal	Diameter	Jacket	Thickness	Approximate	Weight
		Inch	mm	Inch	mm	lbs/1000ft	kg/km
T0210ZG	2	0.452	11.481	0.047	1.194	175	260
T0310ZG	3	0.478	12.141	0.047	1.194	219	326
T0410ZG	4	0.553	14.046	0.062	1.575	283	421
T0510ZG	5	0.603	15.316	0.062	1.575	332	494
T0710ZG	7	0.655	16.637	0.062	1.575	422	628
T0910ZG	9	0.762	19.355	0.062	1.575	522	777
T1210ZG	12	0.898	22.809	0.084	2.134	698	1039

# Belden XLPE/LSZH 2x2Mil Helical Copper Tape Series (cont.)

600 V Shielded, XLPE-LSZH Substation Control Cable

## 8 AWG with Ground + 2x2Mil Helical Copper Shield

Stranding: Tinned (7/16AWG) Color Code: M4  
Insulation thickness: 0.045-XHHW-2 (1.143mm)

Part Number	Conductors	Nominal	Diameter	Jacket	Thickness	Approximate	Weight
		Inch	mm	Inch	mm	lbs/1000ft	kg/km
T02083G	2	0.600	15.240	0.062	1.575	265	394
T03083G	3	0.635	16.129	0.062	1.575	338	503
T04083G	4	0.695	17.653	0.062	1.575	416	619

## 6 AWG with Ground + 2x2Mil Helical Copper Shield

Stranding: Tinned (7/14AWG) Color Code: M4  
Insulation thickness: 0.045-XHHW-2 (1.143mm)

Part Number	Conductors	Nominal	Diameter	Jacket	Thickness	Approximate	Weight
		Inch	mm	Inch	mm	lbs/1000ft	kg/km
T02063G	2	0.680	17.272	0.062	1.575	368	548
T03063G	3	0.721	18.313	0.062	1.575	476	708
T04063G	4	0.792	20.117	0.062	1.575	591	879

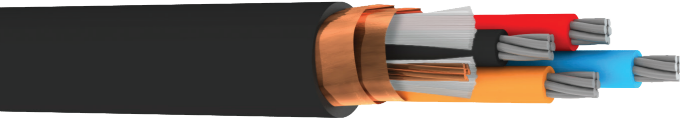
## 4 AWG with Ground + 2x2Mil Helical Copper Shield

Stranding: Tinned (7/12AWG) Color Code: M4  
Insulation thickness: 0.045-XHHW-2 (1.143mm)

Part Number	Conductors	Nominal	Diameter	Jacket	Thickness	Approximate	Weight
		Inch	mm	Inch	mm	lbs/1000ft	kg/km
T02043G	2	0.765	19.431	0.062	1.575	485	722
T03043G	3	0.813	20.650	0.062	1.575	646	961
T04043G	4	0.938	23.825	0.084	2.134	852	1268

# Belden XLPE/X-Link 2x2Mil Helical Copper Tape Series

600 V Shielded, XLPE/X-Link Substation Control Cable



2x2 Mil Copper tape shields provide superior resistance to shield cracking during installation and handling, providing more effective installed performance

UL 1277 TC-ER XLPE/CPE  
FT4/1202

### Operating Temperature

-40 to 90°C Wet/Dry

### Conductor Color Coding

ICEA S-73-532 TABLE E2 - 10 AWG AND SMALLER

ICEA S-73-532 TABLE M4 - 8 AWG AND LARGER

BLACK JACKET (OTHER COLORS AVAILABLE)

### Materials

Class B tinned copper conductors  
XLPE-VW-1 insulation meeting XHHW-2  
Heat, moisture, oil and sunlight resistant  
thermoset LSZH jacket

### Ratings

UL 1277 TC-ER  
UL DIR BUR (3 Conductors or more)  
UL OIL RES I/II  
ICEA S-73-532  
UL1685-FT-4/IEEE 1202  
ICEA S T-29-520  
XHHW-2 VW-1 Conductors  
RoHS

### Other

Suitable for Class 1 Div 2 Hazardous locations  
Excellent Chemical, Oil and Moisture resistance  
130°C Overload Temp  
250°C Short Circuit Temp  
2 Tapes of 0.002" for superior crack resistance and flexibility

### Options

Tinned or Bare Strand  
Fine Strand  
Tinned or Bare Strand  
Fine Strand  
Braid or Foil Shields  
Custom Colors and Print  
1000V/2000V Insulation Upgrade

### 14 AWG with Ground + 2x2Mil Helical Copper Shield

Stranding: Tinned (7/22AWG) Color Code: E2  
Insulation thickness: 0.030-XHHW-2 (0.762mm)

Part Number	Conductors	Nominal	Diameter	Jacket	Thickness	Approximate	Weight
		Inch	mm	Inch	mm	lbs/1000ft	kg/km
Z0214ZG	2	0.368	9.347	0.047	1.194	104	155
Z0314ZG	3	0.388	9.855	0.047	1.194	126	188
Z0414ZG	4	0.422	10.719	0.047	1.194	151	225
Z0514ZG	5	0.460	11.684	0.047	1.194	176	262
Z0714ZG	7	0.499	12.675	0.047	1.194	220	327
Z0914ZG	9	0.610	15.494	0.062	1.575	290	432
Z1214ZG	12	0.680	17.272	0.062	1.575	360	536

### 12 AWG with Ground + 2x2Mil Helical Copper Shield

Stranding: Tinned (7/20AWG) Color Code: E2  
Insulation thickness: 0.030-XHHW-2 (0.762mm)

Part Number	Conductors	Nominal	Diameter	Jacket	Thickness	Approximate	Weight
		Inch	mm	Inch	mm	lbs/1000ft	kg/km
Z0212ZG	2	0.404	10.262	0.047	1.194	132	196
Z0312ZG	3	0.426	10.820	0.047	1.194	162	241
Z0412ZG	4	0.465	11.811	0.047	1.194	196	292
Z0512ZG	5	0.508	12.903	0.047	1.194	229	341
Z0712ZG	7	0.583	14.808	0.062	1.575	309	460
Z0912ZG	9	0.675	17.145	0.062	1.575	380	565
Z1212ZG	12	0.754	19.152	0.062	1.575	476	708

### 10 AWG with Ground + 2x2Mil Helical Copper Shield

Stranding: Tinned (7/18AWG) Color Code: E2  
Insulation thickness: 0.030-XHHW-2 (0.762mm)

Part Number	Conductors	Nominal	Diameter	Jacket	Thickness	Approximate	Weight
		Inch	mm	Inch	mm	lbs/1000ft	kg/km
Z0210ZG	2	0.452	11.481	0.047	1.194	178	265
Z0310ZG	3	0.478	12.141	0.047	1.194	223	332
Z0410ZG	4	0.553	14.046	0.062	1.575	288	429
Z0510ZG	5	0.603	15.316	0.062	1.575	338	503
Z0710ZG	7	0.655	16.637	0.062	1.575	428	637
Z0910ZG	9	0.762	19.355	0.062	1.575	529	787
Z1210ZG	12	0.898	22.809	0.084	2.134	709	1055

# Belden XLPE/X-Link 2x2Mil Helical Copper Tape Series (cont.)

600 V Shielded, XLPE/X-Link Substation Control Cable

## 8 AWG with Ground + 2x2Mil Helical Copper Shield

Stranding: Tinned (7/16AWG) Color Code: M4  
Insulation thickness: 0.045-XHHW-2 (1.143mm)

Part Number	Conductors	Nominal	Diameter	Jacket	Thickness	Approximate	Weight
		Inch	mm	Inch	mm	lbs/1000ft	kg/km
Z02083G	2	0.600	15.240	0.062	1.575	270	402
Z03083G	3	0.635	16.129	0.062	1.575	344	512
Z04083G	4	0.695	17.653	0.062	1.575	422	628

## 6 AWG with Ground + 2x2Mil Helical Copper Shield

Stranding: Tinned (7/14AWG) Color Code: M4  
Insulation thickness: 0.045-XHHW-2 (1.143mm)

Part Number	Conductors	Nominal	Diameter	Jacket	Thickness	Approximate	Weight
		Inch	mm	Inch	mm	lbs/1000ft	kg/km
Z02063G	2	0.680	17.272	0.062	1.575	374	557
Z03063G	3	0.721	18.313	0.062	1.575	483	719
Z04063G	4	0.792	20.117	0.062	1.575	598	890

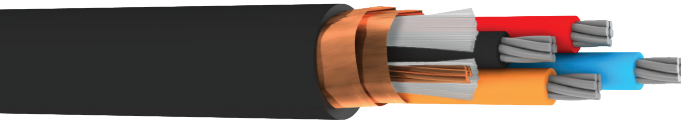
## 4 AWG with Ground + 2x2Mil Helical Copper Shield

Stranding: Tinned (7/12AWG) Color Code: M4  
Insulation thickness: 0.045-XHHW-2 (1.143mm)

Part Number	Conductors	Nominal	Diameter	Jacket	Thickness	Approximate	Weight
		Inch	mm	Inch	mm	lbs/1000ft	kg/km
Z02043G	2	0.765	19.431	0.062	1.575	492	732
Z03043G	3	0.813	20.650	0.062	1.575	653	972
Z04043G	4	0.938	23.825	0.084	2.134	864	1286

## Belden XLPE/CPE 3Mil Helical Copper Tape Series

600 V Shielded, XLPE-CPE Substation Control Cable



3 Mil Copper tape shields provide superior resistance to shield cracking during installation and handling, providing more effective installed performance for smaller cables

UL 1277 TC-ER XLPE/CPE FT4/1202

### Operating Temperature

90°C Wet/Dry

-40° Cold Bend

### Conductor Color Coding

ICEA S-73-532 TABLE E2 - 10 AWG AND SMALLER

ICEA S-73-532 TABLE M4 - 8 AWG AND LARGER

BLACK JACKET (OTHER COLORS AVAILABLE)

### Materials

Class B tinned copper conductors  
XLPE-VW-1 insulation meeting XHHW-2  
Heat, moisture, oil and sunlight resistant  
CPE jacket

### Ratings

UL 1277 TC-ER  
UL DIR BUR (3 Conductors or more)  
UL OIL RES I/II  
ICEA S-73-532  
ICEA S-95-658  
UL1685-FT-4/IEEE 1202  
ICEA S T-29-520  
XHHW-2 VW-1 Conductors  
RoHS

### Other

Suitable for Class 1 Div 2 Hazardous locations  
Excellent Chemical, Oil and Moisture resistance  
130°C Overload Temp  
250°C Short Circuit Temp  
0.003" Helical copper tape

### Options

Tinned or Bare Strand  
Fine Strand  
1000V/2000V Insulation Upgrade

#### 14 AWG with Bare Ground + 3 Mil Helical Copper Shield

Stranding: Tinned (7x22AWG) Color Code E2  
Insulation thickness: 0.030-XHHW-2 (0.762mm)

Part Number	Conductors	Nominal	Diameter	Jacket	Thickness	Approximate	Weight
		Inch	mm	Inch	mm	lbs/1000ft	kg/km
R02146B	2	0.375	9.525	0.050	1.270	98	146
R03146B	3	0.395	10.033	0.050	1.270	119	177
R04146B	4	0.429	10.897	0.050	1.270	143	213
R05146B	5	0.467	11.862	0.050	1.270	167	249
R07146B	7	0.506	12.852	0.050	1.270	210	313
R09146B	9	0.623	15.824	0.070	1.778	279	415
R12146B	12	0.693	17.602	0.070	1.778	348	518

#### 12 AWG with Bare Ground + 3 Mil Helical Copper Shield

Stranding: Tinned (7x20AWG) Color Code E2  
Insulation thickness: 0.030-XHHW-2 (0.762mm)

Part Number	Conductors	Nominal	Diameter	Jacket	Thickness	Approximate	Weight
		Inch	mm	Inch	mm	lbs/1000ft	kg/km
R02126B	2	0.411	10.439	0.050	1.270	125	186
R03126B	3	0.433	10.998	0.050	1.270	155	231
R04126B	4	0.472	11.989	0.050	1.270	187	278
R05126B	5	0.515	13.081	0.050	1.270	220	327
R07126B	7	0.596	15.138	0.070	1.778	298	443
R09126B	9	0.688	17.475	0.070	1.778	368	548
R12126B	12	0.767	19.482	0.070	1.778	462	688

#### 10 AWG with Bare Ground + 3 Mil Helical Copper Shield

Stranding: Tinned (7x18AWG) Color Code E2  
Insulation thickness: 0.030-XHHW-2 (0.762mm)

Part Number	Conductors	Nominal	Diameter	Jacket	Thickness	Approximate	Weight
		Inch	mm	Inch	mm	lbs/1000ft	kg/km
R02106B	2	0.459	11.659	0.050	1.270	170	253
R03106B	3	0.485	12.319	0.050	1.270	214	318
R04106B	4	0.566	14.376	0.070	1.778	278	414
R05106B	5	0.616	15.646	0.070	1.778	327	487
R07106B	7	0.668	16.967	0.070	1.778	416	619
R09106B	9	0.775	19.685	0.070	1.778	515	766
R12106B	12	0.915	23.241	0.090	2.286	691	1028



# Belden XLPE/CPE 3Mil Helical Copper Tape Series (cont.)

## 600 V Shielded, XLPE-CPE Substation Control Cable

### 8 AWG with Bare Ground + 3 Mil Helical Copper Shield

Stranding: Tinned (7/16AWG) Color Code: M4  
 Insulation thickness: 0.045-XHHW-2 (1.143 mm)

Part Number	Conductors	Nominal	Diameter	Jacket	Thickness	Approximate	Weight
		Inch	mm	Inch	mm	lbs/1000ft	kg/km
R02087B	2	0.613	15.570	0.070	1.778	260	387
R03087B	3	0.648	16.459	0.070	1.778	333	496
R04087B	4	0.708	17.983	0.070	1.778	409	609

### 6 AWG with Bare Ground + 3 Mil Helical Copper Shield

Stranding: Tinned (7/14AWG) Color Code: M4  
 Insulation thickness: 0.045-XHHW-2 (1.143 mm)

Part Number	Conductors	Nominal	Diameter	Jacket	Thickness	Approximate	Weight
		Inch	mm	Inch	mm	lbs/1000ft	kg/km
R02067B	2	0.693	17.602	0.070	1.778	362	539
R03067B	3	0.734	18.644	0.070	1.778	470	699
R04067B	4	0.805	20.447	0.700	17.780	583	868

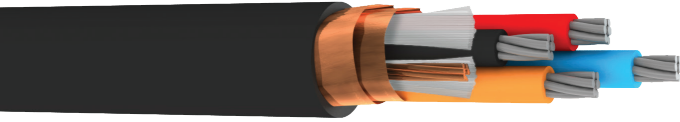
### 4 AWG with Bare Ground + 3 Mil Helical Copper Shield

Stranding: Tinned (7/12AWG) Color Code: M4  
 Insulation thickness: 0.045-XHHW-2 (1.143 mm)

Part Number	Conductors	Nominal	Diameter	Jacket	Thickness	Approximate	Weight
		Inch	mm	Inch	mm	lbs/1000ft	kg/km
R02047B	2	0.778	19.761	0.070	1.778	478	711
R03047B	3	0.826	20.980	0.070	1.778	638	949
R04047B	4	0.955	24.257	0.090	2.286	844	1256

# Belden FR-EP/CPE 3Mil Helical Copper Tape Series

600 V Shielded, FR-EP/CPE Substation Control Cable



3 Mil Copper tape shields provide superior resistance to shield cracking during installation and handling, providing more effective installed performance for smaller cables

UL 1277 TC-ER EPR/CPE  
FT4/1202

### Operating Temperature

90°C Wet/Dry  
-40° Cold Bend

### Conductor Color Coding

ICEA S-73-532 TABLE E2 - 10 AWG AND SMALLER

ICEA S-73-532 TABLE M4 - 8 AWG AND LARGER

BLACK JACKET (OTHER COLORS AVAILABLE)

### Materials

Class B tinned copper conductors  
EPR-VW-1 insulation meeting XHHW-2 Heat, moisture, oil and sunlight resistant CPE jacket

### Ratings

UL 1277 TC-ER  
UL DIR BUR (3 Conductors or more)  
UL OIL RES I/II  
ICEA S-73-532  
ICEA S-95-658  
UL1685-FT-4/IEEE 1202  
ICEA S T-29-520  
XHHW-2 VW-1 Conductors  
RoHS

### Other

Suitable for Class 1 Div 2 Hazardous locations  
Excellent Chemical, Oil and Moisture resistance  
130°C Overload Temp  
250°C Short Circuit Temp  
0.003" Helical copper tape

### Options

Tinned or Bare Strand  
Fine Strand  
1000V/2000V Insulation Upgrade

#### 14 AWG with Ground + 3 Mil Helical Copper Shield

Stranding: Tinned (7/22AWG) Color Code: E2  
Insulation thickness: 0.030-XHHW-2 (0.762mm)

Part Number	Conductors	Nominal	Diameter	Jacket	Thickness	Approximate	Weight
		Inch	mm	Inch	mm	lbs/1000ft	kg/km
P02146B	2	0.375	9.525	0.050	1.270	98	146
P03146B	3	0.395	10.033	0.050	1.270	119	177
P04146B	4	0.429	10.897	0.050	1.270	143	213
P05146B	5	0.467	11.862	0.050	1.270	167	249
P07146B	7	0.506	12.852	0.050	1.270	210	313
P09146B	9	0.623	15.824	0.070	1.778	279	415
P12146B	12	0.693	17.602	0.070	1.778	348	518

#### 12 AWG with Ground + 3 Mil Helical Copper Shield

Stranding: Tinned (7/20AWG) Color Code: E2  
Insulation thickness: 0.030-XHHW-2 (0.762mm)

Part Number	Conductors	Nominal	Diameter	Jacket	Thickness	Approximate	Weight
		Inch	mm	Inch	mm	lbs/1000ft	kg/km
P02126B	2	0.411	10.439	0.050	1.270	125	186
P03126B	3	0.433	10.998	0.050	1.270	155	231
P04126B	4	0.472	11.989	0.050	1.270	187	278
P05126B	5	0.515	13.081	0.050	1.270	220	327
P07126B	7	0.596	15.138	0.070	1.778	298	443
P09126B	9	0.688	17.475	0.070	1.778	368	548
P12126B	12	0.767	19.482	0.070	1.778	462	688

#### 10 AWG with Ground + 3 Mil Helical Copper Shield

Stranding: Tinned (7/18AWG) Color Code: E2  
Insulation thickness: 0.030-XHHW-2 (0.762mm)

Part Number	Conductors	Nominal	Diameter	Jacket	Thickness	Approximate	Weight
		Inch	mm	Inch	mm	lbs/1000ft	kg/km
P02106B	2	0.459	11.659	0.050	1.270	170	253
P03106B	3	0.485	12.319	0.050	1.270	214	318
P04106B	4	0.566	14.376	0.070	1.778	278	414
P05106B	5	0.616	15.646	0.070	1.778	327	487
P07106B	7	0.668	16.967	0.070	1.778	416	619
P09106B	9	0.775	19.685	0.070	1.778	515	766
P12106B	12	0.915	23.241	0.090	2.286	691	1028

# Belden FR-EP/CPE 3Mil Helical Copper Tape Series (cont.)

600 V Shielded, FR-EP/CPE Substation Control Cable

## 8 AWG with Ground + 3 Mil Helical Copper Shield

Stranding: Tinned (7/16AWG) Color Code: M4  
Insulation thickness: 0.045-XHHW-2 (1.143mm)

Part Number	Conductors	Nominal	Diameter	Jacket	Thickness	Approximate	Weight
		Inch	mm	Inch	mm	lbs/1000ft	kg/km
P02087B	2	0.613	15.570	0.070	1.778	260	387
P03087B	3	0.648	16.459	0.070	1.778	333	496
P04087B	4	0.708	17.983	0.070	1.778	409	609

## 6 AWG with Ground + 3 Mil Helical Copper Shield

Stranding: Tinned (7/14AWG) Color Code: M4  
Insulation thickness: 0.045-XHHW-2 (1.143mm)

Part Number	Conductors	Nominal	Diameter	Jacket	Thickness	Approximate	Weight
		Inch	mm	Inch	mm	lbs/1000ft	kg/km
P02067B	2	0.693	17.602	0.070	1.778	362	539
P03067B	3	0.734	18.644	0.070	1.778	470	699
P04067B	4	0.805	20.447	0.700	17.780	583	868

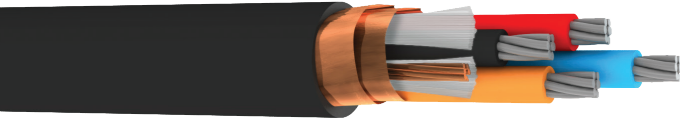
## 4 AWG with Ground + 3 Mil Helical Copper Shield

Stranding: Tinned (7/12AWG) Color Code: M4  
Insulation thickness: 0.045-XHHW-2 (1.143mm)

Part Number	Conductors	Nominal	Diameter	Jacket	Thickness	Approximate	Weight
		Inch	mm	Inch	mm	lbs/1000ft	kg/km
P02047B	2	0.778	19.761	0.070	1.778	478	711
P03047B	3	0.826	20.980	0.070	1.778	638	949
P04047B	4	0.955	24.257	0.090	2.286	844	1256

# Belden XLPE/PVC 3Mil Helical Copper Tape Series

600 V Shielded, XLPE-PVC Substation Control Cable



3 Mil Copper tape shields provide superior resistance to shield cracking during installation and handling, providing more effective installed performance for smaller cables

UL 1277 TC-ER XLPE/PVC FT4/1202

### Operating Temperature

-30 to 90°C Wet/Dry

### Conductor Color Coding

ICEA S-73-532 TABLE E2 - 10 AWG AND SMALLER

ICEA S-73-532 TABLE M4 - 8 AWG AND LARGER

BLACK JACKET (OTHER COLORS AVAILABLE)

### Materials

Class B tinned copper conductors  
XLPE-VW-1 insulation meeting XHHW-2 Heat, moisture, oil and sunlight resistant PVC jacket

### Ratings

UL 1277 TC-ER  
UL DIR BUR (3 Conductors or more)  
ICEA S-73-532  
ICEA S-95-658  
UL 1685-FT-4/IEEE 1202  
ICEA S T-29-520  
XHHW-2 VW-1 Conductors  
RoHS

### Other

Suitable for Class 1 Div 2 Hazardous locations  
Excellent Chemical, Oil and Moisture resistance  
130°C Overload Temp  
250°C Short Circuit Temp  
0.003" Helical copper tape

### Options

Tinned or Bare Strand  
Fine Strand  
1000V/2000V Insulation Upgrade

#### 14 AWG with Ground + 3 Mil Helical Copper Shield

Stranding: Tinned (7/22AWG) Color Code: E2  
Insulation thickness: 0.030-XHHW-2 (0.762mm)

Part Number	Conductors	Nominal	Diameter	Jacket	Thickness	Approximate	Weight
		Inch	mm	Inch	mm	lbs/1000ft	kg/km
D02146G	2	0.365	9.271	0.047	1.194	95	141
D03146G	3	0.385	9.779	0.047	1.194	117	174
D04146G	4	0.419	10.643	0.047	1.194	140	208
D05146G	5	0.457	11.608	0.047	1.194	164	244
D07146G	7	0.496	12.598	0.047	1.194	207	308
D09146G	9	0.607	15.418	0.062	1.575	272	405
D12146G	12	0.677	17.196	0.062	1.575	340	506

#### 12 AWG with Ground + 3 Mil Helical Copper Shield

Stranding: Tinned (7/20AWG) Color Code: E2  
Insulation thickness: 0.030-XHHW-2 (0.762mm)

Part Number	Conductors	Nominal	Diameter	Jacket	Thickness	Approximate	Weight
		Inch	mm	Inch	mm	lbs/1000ft	kg/km
D02126G	2	0.401	10.185	0.047	1.194	122	182
D03126G	3	0.423	10.744	0.047	1.194	152	226
D04126G	4	0.462	11.735	0.047	1.194	184	274
D05126G	5	0.505	12.827	0.047	1.194	216	321
D07126G	7	0.580	14.732	0.062	1.575	292	435
D09126G	9	0.672	17.069	0.062	1.575	360	536
D12126G	12	0.751	19.075	0.062	1.575	453	674

#### 10 AWG with Ground + 3 Mil Helical Copper Shield

Stranding: Tinned (7/18AWG) Color Code: E2  
Insulation thickness: 0.030-XHHW-2 (0.762mm)

Part Number	Conductors	Nominal	Diameter	Jacket	Thickness	Approximate	Weight
		Inch	mm	Inch	mm	lbs/1000ft	kg/km
D02106G	2	0.449	11.405	0.047	1.194	167	249
D03106G	3	0.475	12.065	0.047	1.194	211	314
D04106G	4	0.550	13.970	0.062	1.575	272	405
D05106G	5	0.600	15.240	0.062	1.575	320	476
D07106G	7	0.652	16.561	0.062	1.575	409	609
D09106G	9	0.759	19.279	0.062	1.575	507	754
D12106G	12	0.895	22.733	0.084	2.134	678	1009

# Belden XLPE/PVC 3Mil Helical Copper Tape Series (cont.)

600 V Shielded, XLPE-PVC Substation Control Cable

## 8 AWG with Ground + 3 Mil Helical Copper Shield

Stranding: Tinned (7/16AWG) Color Code: M4  
Insulation thickness: 0.045-XHHW-2 (1.143mm)

Part Number	Conductors	Nominal	Diameter	Jacket	Thickness	Approximate	Weight
		Inch	mm	Inch	mm	lbs/1000ft	kg/km
D02087G	2	0.597	15.164	0.062	1.575	253	376
D03087G	3	0.632	16.053	0.062	1.575	325	484
D04087G	4	0.692	17.577	0.062	1.575	402	598

## 6 AWG with Ground + 3 Mil Helical Copper Shield

Stranding: Tinned (7/14AWG) Color Code: M4  
Insulation thickness: 0.045-XHHW-2 (1.143mm)

Part Number	Conductors	Nominal	Diameter	Jacket	Thickness	Approximate	Weight
		Inch	mm	Inch	mm	lbs/1000ft	kg/km
D02067G	2	0.677	17.196	0.062	1.575	354	527
D03067G	3	0.718	18.237	0.062	1.575	462	688
D04067G	4	0.789	20.041	0.062	1.575	575	856

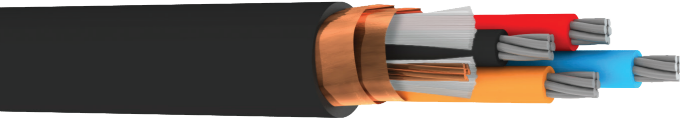
## 4 AWG with Ground + 3 Mil Helical Copper Shield

Stranding: Tinned (7/12AWG) Color Code: M4  
Insulation thickness: 0.045-XHHW-2 (1.143mm)

Part Number	Conductors	Nominal	Diameter	Jacket	Thickness	Approximate	Weight
		Inch	mm	Inch	mm	lbs/1000ft	kg/km
D02047G	2	0.762	19.355	0.062	1.575	469	698
D03047G	3	0.810	20.574	0.062	1.575	629	936
D04047G	4	0.935	23.749	0.084	2.134	832	1238

## Belden XLPE/LSZH 3Mil Helical Copper Tape Series

600 V Shielded, XLPE-LSZH Substation Control Cable



3 Mil Copper tape shields provide superior resistance to shield cracking during installation and handling, providing more effective installed performance for smaller cables

UL 1277 TC-ER XLPE/LSZH  
FT4/1202/NFPA 130

### Operating Temperature

-30 to 90°C Wet/Dry

### Conductor Color Coding

ICEA S-73-532 TABLE E2 - 10 AWG AND SMALLER

ICEA S-73-532 TABLE M4 - 8 AWG AND LARGER

BLACK JACKET (OTHER COLORS AVAILABLE)

### Materials

Class B tinned copper conductors  
XLPE-VW-1 insulation meeting XHHW-2 Heat, moisture, oil and sunlight resistant LSZH jacket

### Ratings

UL 1277 TC-ER  
UL DIR BUR (3 Conductors or more)  
ICEA S-73-532  
ICEA S-95-658  
XHHW-2 VW-1 Conductors  
RoHS  
TC-LS  
NFPA 130 Compliance  
FT4/IEEE1202

### Other

Suitable for Class 1 Div 2 Hazardous locations  
130°C Overload Temp  
250°C Short Circuit Temp  
0.003" Helical copper tape

### Options

Tinned or Bare Strand  
Fine Strand  
Braid or Foil Shields  
Custom Colors and Print  
1000V/2000V Insulation Upgrade

### 14 AWG with Ground + 3 Mil Helical Copper Shield

Stranding: Tinned (7/22AWG) Color Code: E2  
Insulation thickness: 0.030-XHHW-2 (0.762mm)

Part Number	Conductors	Nominal	Diameter	Jacket	Thickness	Approximate	Weight
		Inch	mm	Inch	mm	lbs/1000ft	kg/km
T02146G	2	0.365	9.271	0.047	1.194	97	144
T03146G	3	0.385	9.779	0.047	1.194	118	176
T04146G	4	0.419	10.643	0.047	1.194	142	211
T05146G	5	0.457	11.608	0.047	1.194	166	247
T07146G	7	0.496	12.598	0.047	1.194	209	311
T09146G	9	0.607	15.418	0.062	1.575	276	411
T12146G	12	0.677	17.196	0.062	1.575	344	512

### 12 AWG with Ground + 3 Mil Helical Copper Shield

Stranding: Tinned (7/20AWG) Color Code: E2  
Insulation thickness: 0.030-XHHW-2 (0.762mm)

Part Number	Conductors	Nominal	Diameter	Jacket	Thickness	Approximate	Weight
		Inch	mm	Inch	mm	lbs/1000ft	kg/km
T02126G	2	0.401	10.185	0.047	1.194	124	185
T03126G	3	0.423	10.744	0.047	1.194	153	228
T04126G	4	0.462	11.735	0.047	1.194	186	277
T05126G	5	0.505	12.827	0.047	1.194	218	324
T07126G	7	0.580	14.732	0.062	1.575	295	439
T09126G	9	0.672	17.069	0.062	1.575	364	542
T12126G	12	0.751	19.075	0.062	1.575	457	680

### 10 AWG with Ground + 3 Mil Helical Copper Shield

Stranding: Tinned (7/18AWG) Color Code: E2  
Insulation thickness: 0.030-XHHW-2 (0.762mm)

Part Number	Conductors	Nominal	Diameter	Jacket	Thickness	Approximate	Weight
		Inch	mm	Inch	mm	lbs/1000ft	kg/km
T02106G	2	0.449	11.405	0.047	1.194	169	251
T03106G	3	0.475	12.065	0.047	1.194	213	317
T04106G	4	0.550	13.970	0.062	1.575	275	409
T05106G	5	0.600	15.240	0.062	1.575	324	482
T07106G	7	0.652	16.561	0.062	1.575	412	613
T09106G	9	0.759	19.279	0.062	1.575	511	760
T12106G	12	0.895	22.733	0.084	2.134	685	1019

# Belden XLPE/LSZH 3Mil Helical Copper Tape Series (cont.)

600 V Shielded, XLPE-LSZH Substation Control Cable

## 8 AWG with Ground + 3 Mil Helical Copper Shield

Stranding: Tinned (7/16AWG) Color Code: M4  
Insulation thickness: 0.045-XHHW-2 (1.143mm)

Part Number	Conductors	Nominal	Diameter	Jacket	Thickness	Approximate	Weight
		Inch	mm	Inch	mm	lbs/1000ft	kg/km
T02087G	2	0.597	15.164	0.062	1.575	256	381
T03087G	3	0.632	16.053	0.062	1.575	329	490
T04087G	4	0.692	17.577	0.062	1.575	405	603

## 6 AWG with Ground + 3 Mil Helical Copper Shield

Stranding: Tinned (7/14AWG) Color Code: M4  
Insulation thickness: 0.045-XHHW-2 (1.143mm)

Part Number	Conductors	Nominal	Diameter	Jacket	Thickness	Approximate	Weight
		Inch	mm	Inch	mm	lbs/1000ft	kg/km
T02067G	2	0.677	17.196	0.062	1.575	358	533
T03067G	3	0.718	18.237	0.062	1.575	466	693
T04067G	4	0.789	20.041	0.062	1.575	579	862

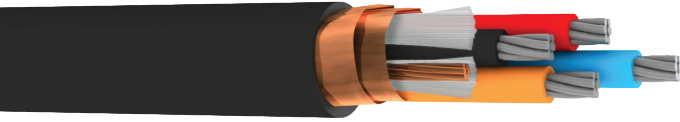
## 4 AWG with Ground + 3 Mil Helical Copper Shield

Stranding: Tinned (7/12AWG) Color Code: M4  
Insulation thickness: 0.045-XHHW-2 (1.143mm)

Part Number	Conductors	Nominal	Diameter	Jacket	Thickness	Approximate	Weight
		Inch	mm	Inch	mm	lbs/1000ft	kg/km
T02047G	2	0.762	19.355	0.062	1.575	474	705
T03047G	3	0.810	20.574	0.062	1.575	633	942
T04047G	4	0.935	23.749	0.084	2.134	838	1247

# Belden XLPE/X-LINK LSZH 3 Mil Helical Copper Tape Series

## 600 V Shielded, XLPE-X-Link Substation Control Cable



3 Mil Copper tape shields provide superior resistance to shield cracking during installation and handling, providing more effective installed performance

UL 1277 TC-ER XLPE/CPE  
FT4/1202

### Operating Temperature

-40 to 90°C Wet/Dry

### Conductor Color Coding

ICEA S-73-532 TABLE E2 - 10 AWG AND SMALLER

ICEA S-73-532 TABLE M4 - 8 AWG AND LARGER

BLACK JACKET (OTHER COLORS AVAILABLE)

### Materials

Class B tinned copper conductors  
XLPE-VW-1 insulation meeting XHHW-2 Heat, moisture, oil and sunlight resistant thermoset LSZH jacket

### Ratings

UL 1277 TC-ER  
UL DIR BUR (3 Conductors or more)  
UL OIL RES I/II  
ICEA S-73-532  
UL1685-FT-4/IEEE 1202  
ICEA S T-29-520  
XHHW-2 VW-1 Conductors  
RoHS

### Other

Suitable for Class 1 Div 2 Hazardous locations  
Excellent Chemical, Oil and Moisture resistance  
130°C Overload Temp  
250°C Short Circuit Temp  
0.003" Helical Copper Tape

### Options

Tinned or Bare Strand  
Fine Strand  
1000V/2000V Insulation Upgrade

#### 14 AWG with Ground + 3 Mil Helical Copper Shield

Stranding: Tinned (7/22AWG) Color Code: E2  
Insulation thickness: 0.030-XHHW-2 (0.762mm)

Part Number	Conductors	Nominal	Diameter	Jacket	Thickness	Approximate	Weight
		Inch	mm	Inch	mm	lbs/1000ft	kg/km
Z02146G	2	0.365	9.271	0.047	1.194	99	147
Z03146G	3	0.385	9.779	0.047	1.194	121	180
Z04146G	4	0.419	10.643	0.047	1.194	145	216
Z05146G	5	0.457	11.608	0.047	1.194	169	251
Z07146G	7	0.496	12.598	0.047	1.194	212	315
Z09146G	9	0.607	15.418	0.062	1.575	281	418
Z12146G	12	0.677	17.196	0.062	1.575	350	521

#### 12 AWG with Ground + 3 Mil Helical Copper Shield

Stranding: Tinned (7/20AWG) Color Code: E2  
Insulation thickness: 0.030-XHHW-2 (0.762mm)

Part Number	Conductors	Nominal	Diameter	Jacket	Thickness	Approximate	Weight
		Inch	mm	Inch	mm	lbs/1000ft	kg/km
Z02126G	2	0.401	10.185	0.047	1.194	127	189
Z03126G	3	0.423	10.744	0.047	1.194	156	232
Z04126G	4	0.462	11.735	0.047	1.194	189	281
Z05126G	5	0.505	12.827	0.047	1.194	222	330
Z07126G	7	0.580	14.732	0.062	1.575	300	446
Z09126G	9	0.672	17.069	0.062	1.575	370	551
Z12126G	12	0.751	19.075	0.062	1.575	464	690

#### 10 AWG with Ground + 3 Mil Helical Copper Shield

Stranding: Tinned (7/18AWG) Color Code: E2  
Insulation thickness: 0.030-XHHW-2 (0.762mm)

Part Number	Conductors	Nominal	Diameter	Jacket	Thickness	Approximate	Weight
		Inch	mm	Inch	mm	lbs/1000ft	kg/km
Z02106G	2	0.449	11.405	0.047	1.194	172	256
Z03106G	3	0.475	12.065	0.047	1.194	216	321
Z04106G	4	0.550	13.970	0.062	1.575	280	417
Z05106G	5	0.600	15.240	0.062	1.575	329	490
Z07106G	7	0.652	16.561	0.062	1.575	418	622
Z09106G	9	0.759	19.279	0.062	1.575	518	771
Z12106G	12	0.895	22.733	0.084	2.134	696	1036



# Belden XLPE/X-LINK LSZH 3 Mil Helical Copper Tape Series (cont.) 600 V Shielded, XLPE-X-Link Substation Control Cable

## 8 AWG with Ground + 3 Mil Helical Copper Shield

Stranding: Tinned (7/16AWG) Color Code: M4  
Insulation thickness: 0.045-XHHW-2 (1.143mm)

Part Number	Conductors	Nominal	Diameter	Jacket	Thickness	Approximate	Weight
		Inch	mm	Inch	mm	lbs/1000ft	kg/km
Z02087G	2	0.597	15.164	0.062	1.575	262	390
Z03087G	3	0.632	16.053	0.062	1.575	335	499
Z04087G	4	0.692	17.577	0.062	1.575	412	613

## 6 AWG with Ground + 3 Mil Helical Copper Shield

Stranding: Tinned (7/14AWG) Color Code: M4  
Insulation thickness: 0.045-XHHW-2 (1.143mm)

Part Number	Conductors	Nominal	Diameter	Jacket	Thickness	Approximate	Weight
		Inch	mm	Inch	mm	lbs/1000ft	kg/km
Z02067G	2	0.677	17.196	0.062	1.575	364	542
Z03067G	3	0.718	18.237	0.062	1.575	472	702
Z04067G	4	0.789	20.041	0.062	1.575	586	872

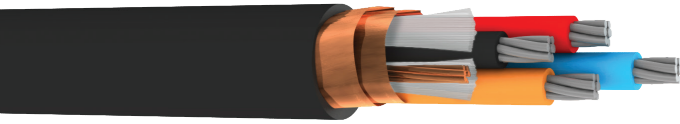
## 4 AWG with Ground + 3 Mil Helical Copper Shield

Stranding: Tinned (7/12AWG) Color Code: M4  
Insulation thickness: 0.045-XHHW-2 (1.143mm)

Part Number	Conductors	Nominal	Diameter	Jacket	Thickness	Approximate	Weight
		Inch	mm	Inch	mm	lbs/1000ft	kg/km
Z02047G	2	0.762	19.355	0.062	1.575	481	716
Z03047G	3	0.810	20.574	0.062	1.575	641	954
Z04047G	4	0.935	23.749	0.084	2.134	850	1265

# Belden XLPE/CPE 5Mil Helical Copper Tape Series

600 V Shielded, XLPE-CPE Substation Control Cable



5 Mil Copper tape shields provide superior conduction of fault currents and EMI protection

UL 1277 TC-ER XLPE/CPE FT4/1202

## Operating Temperature

90°C Wet/Dry  
-40° Cold Bend

## Conductor Color Coding

ICEA S-73-532 TABLE E2 - 10 AWG AND SMALLER

ICEA S-73-532 TABLE M4 - 8 AWG AND LARGER

BLACK JACKET (OTHER COLORS AVAILABLE)

## Materials

Class B tinned copper conductors  
XLPE-VW-1 insulation meeting XHHW-2 Heat, moisture, oil and sunlight resistant CPE jacket

## Ratings

UL 1277 TC-ER  
UL DIR BUR (3 Conductors or more)  
UL OIL RES I/II  
ICEA S-73-532  
ICEA S-95-658  
UL1685-FT-4/IEEE 1202  
ICEA S T-29-520  
XHHW-2 VW-1 Conductors  
RoHS

## Other

Suitable for Class 1 Div 2 Hazardous locations  
Excellent Chemical, Oil and Moisture resistance  
130°C Overload Temp  
250°C Short Circuit Temp  
0.005" Helical copper tape

## Options

Tinned or Bare Strand  
Fine Strand  
1000V/2000V Insulation Upgrade

## Notes

For Cables under 0.625" 5 mil tape will increase the likelihood of shield cracking during handling

### 14 AWG with Ground + 5 Mil Helical Copper Shield

Stranding: Tinned (7x22AWG) Color Code E2  
Insulation thickness: 0.030-XHHW-2 (0.762mm)

Part Number	Conductors	Nominal	Diameter	Jacket	Thickness	Approximate	Weight
		Inch	mm	Inch	mm	lbs/1000ft	kg/km
R0914EB	9	0.629	15.977	0.070	1.778	297	442
R1214EB	12	0.699	17.755	0.070	1.778	368	548

### 12 AWG with Ground + 5 Mil Helical Copper Shield

Stranding: Tinned (7x20AWG) Color Code E2  
Insulation thickness: 0.030-XHHW-2 (0.762mm)

Part Number	Conductors	Nominal	Diameter	Jacket	Thickness	Approximate	Weight
		Inch	mm	Inch	mm	lbs/1000ft	kg/km
R0912EB	9	0.694	17.628	0.070	1.778	388	577
R1212EB	12	0.773	19.634	0.070	1.778	484	720

### 10 AWG with Ground + 5 Mil Helical Copper Shield

Stranding: Tinned (7x18AWG) Color Code E2  
Insulation thickness: 0.030-XHHW-2 (0.762mm)

Part Number	Conductors	Nominal	Diameter	Jacket	Thickness	Approximate	Weight
		Inch	mm	Inch	mm	lbs/1000ft	kg/km
R0510EB	5	0.622	15.799	0.070	1.778	345	513
R0710EB	7	0.674	17.120	0.070	1.778	435	647
R0910EB	9	0.781	19.837	0.070	1.778	538	801
R1210EB	12	0.921	23.393	0.090	2.286	717	1067

### 8 AWG with Ground + 5 Mil Helical Copper Shield

Stranding: Tinned (7x16AWG) Color Code M4  
Insulation thickness: 0.045-XHHW-2 (1.143mm)

Part Number	Conductors	Nominal	Diameter	Jacket	Thickness	Approximate	Weight
		Inch	mm	Inch	mm	lbs/1000ft	kg/km
R0208FB	2	0.619	15.723	0.070	1.778	277	412
R0308FB	3	0.654	16.612	0.070	1.778	351	522
R0408FB	4	0.714	18.136	0.070	1.778	430	640

# Belden XLPE/CPE 5Mil Helical Copper Tape Series (cont.)

600 V Shielded, XLPE-CPE Substation Control Cable

## 6 AWG with Ground + 5 Mil Helical Copper Shield

Stranding: Tinned (7x14AWG) Color Code M4  
Insulation thickness: 0.045-XHHW-2 (1.143mm)

Part Number	Conductors	Nominal	Diameter	Jacket	Thickness	Approximate	Weight
		Inch	mm	Inch	mm	lbs/1000ft	kg/km
R0206FB	2	0.699	17.755	0.070	1.778	382	568
R0306FB	3	0.740	18.796	0.070	1.778	491	731
R0406FB	4	0.811	20.599	0.070	1.778	607	903

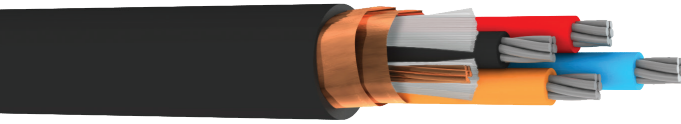
## 4 AWG with Ground + 5 Mil Helical Copper Shield

Stranding: Tinned (7x12AWG) Color Code M4  
Insulation thickness: 0.045-XHHW-2 (1.143mm)

Part Number	Conductors	Nominal	Diameter	Jacket	Thickness	Approximate	Weight
		Inch	mm	Inch	mm	lbs/1000ft	kg/km
R0204FB	2	0.784	19.914	0.070	1.778	501	746
R0304FB	3	0.832	21.133	0.070	1.778	663	987
R0404FB	4	0.961	24.409	0.090	2.286	872	1298

## Belden FR-EP/CPE 5Mil Helical Copper Tape Series

600 V Shielded, FR-EP/CPE Substation Control Cable



5 Mil Copper tape shields provide superior conduction of fault currents and EMI protection

UL 1277 TC-ER EPR/CPE FT4/1202

### Operating Temperature

90°C Wet/Dry  
-40° Cold Bend

### Conductor Color Coding

ICEA S-73-532 TABLE E2 - 10 AWG AND SMALLER

ICEA S-73-532 TABLE M4 - 8 AWG AND LARGER

BLACK JACKET (OTHER COLORS AVAILABLE)

### Materials

Class B tinned copper conductors  
EPR-VW-1 insulation meeting XHHW-2  
Heat, moisture, oil and sunlight resistant CPE jacket

### Ratings

UL 1277 TC-ER  
UL DIR BUR (3 Conductors or more)  
UL OIL RES I/II  
ICEA S-73-532  
ICEA S-95-658  
UL1685-FT-4/IEEE 1202  
ICEA S T-29-520  
XHHW-2 VW-1 Conductors  
RoHS

### Other

Suitable for Class 1 Div 2 Hazardous locations  
Excellent Chemical, Oil and Moisture resistance  
130°C Overload Temp  
250°C Short Circuit Temp  
0.005" Helical copper tape

### Options

Tinned or Bare Strand  
Fine Strand  
1000V/2000V Insulation Upgrade

### Notes

For Cables under 0.625" 5 mil tape will increase the likelihood of shield cracking during handling

#### 14 AWG with Ground + 5Mil Helical Copper Shield

Stranding: Tinned (7/22AWG) Color Code: E2  
Insulation thickness: 0.030-XHHW-2 (0.762mm)

Part Number	Conductors	Nominal	Diameter	Jacket	Thickness	Approximate	Weight
		Inch	mm	Inch	mm	lbs/1000ft	kg/km
P0914EB	9	0.629	15.977	0.070	1.778	297	442
P1214EB	12	0.699	17.755	0.070	1.778	368	548

#### 12 AWG with Ground + 5Mil Helical Copper Shield

Stranding: Tinned (7/20AWG) Color Code: E2  
Insulation thickness: 0.030-XHHW-2 (0.762mm)

Part Number	Conductors	Nominal	Diameter	Jacket	Thickness	Approximate	Weight
		Inch	mm	Inch	mm	lbs/1000ft	kg/km
P0912EB	9	0.694	17.628	0.070	1.778	388	577
P1212EB	12	0.773	19.634	0.070	1.778	484	720

#### 10 AWG with Ground + 5Mil Helical Copper Shield

Stranding: Tinned (7/18AWG) Color Code: E2  
Insulation thickness: 0.030-XHHW-2 (0.762mm)

Part Number	Conductors	Nominal	Diameter	Jacket	Thickness	Approximate	Weight
		Inch	mm	Inch	mm	lbs/1000ft	kg/km
P0510EB	5	0.622	15.799	0.070	1.778	345	513
P0710EB	7	0.674	17.120	0.070	1.778	435	647
P0910EB	9	0.781	19.837	0.070	1.778	538	801
P1210EB	12	0.921	23.393	0.090	2.286	717	1067

#### 8 AWG with Ground + 5Mil Helical Copper Shield

Stranding: Tinned (7/16AWG) Color Code: M4  
Insulation thickness: 0.045-XHHW-2 (1.143mm)

Part Number	Conductors	Nominal	Diameter	Jacket	Thickness	Approximate	Weight
		Inch	mm	Inch	mm	lbs/1000ft	kg/km
P0208FB	2	0.619	15.723	0.070	1.778	277	412
P0308FB	3	0.654	16.612	0.070	1.778	351	522
P0408FB	4	0.714	18.136	0.070	1.778	430	640

# Belden FR-EP/CPE 5Mil Helical Copper Tape Series (cont.)

600 V Shielded, FR-EP/CPE Substation Control Cable

## 6 AWG with Ground + 5Mil Helical Copper Shield

Stranding: Tinned (7/14AWG) Color Code: M4  
Insulation thickness: 0.045-XHHW-2 (1.143mm)

Part Number	Conductors	Nominal	Diameter	Jacket	Thickness	Approximate	Weight
		Inch	mm	Inch	mm	lbs/1000ft	kg/km
P0206FB	2	0.699	17.755	0.070	1.778	382	568
P0306FB	3	0.740	18.796	0.070	1.778	491	731
P0406FB	4	0.811	20.599	0.070	1.778	607	903

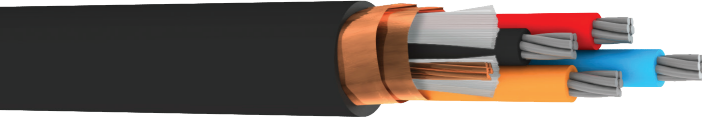
## 4 AWG with Ground + 5Mil Helical Copper Shield

Stranding: Tinned (7/12AWG) Color Code: M4  
Insulation thickness: 0.045-XHHW-2 (1.143mm)

Part Number	Conductors	Nominal	Diameter	Jacket	Thickness	Approximate	Weight
		Inch	mm	Inch	mm	lbs/1000ft	kg/km
P0204FB	2	0.784	19.914	0.070	1.778	501	746
P0304FB	3	0.832	21.133	0.070	1.778	663	987
P0404FB	4	0.961	24.409	0.090	2.286	872	1298

# Belden XLPE/PVC 5 Mil Helical Copper Tape Series

600 V Shielded, XLPE-PVC Substation Control Cable



5 Mil Copper tape shields provide superior conduction of fault currents and EMI protection

UL 1277 TC-ER XLPE/CPE FT4/1202

### Operating Temperature

-30 to 90°C Wet/Dry

### Conductor Color Coding

ICEA S-73-532 TABLE E2 - 10 AWG AND SMALLER

ICEA S-73-532 TABLE M4 - 8 AWG AND LARGER

BLACK JACKET (OTHER COLORS AVAILABLE)

### Materials

Class B tinned copper conductors  
XLPE-VW-1 insulation meeting XHHW-2  
Heat, moisture, oil and sunlight resistant  
PVC jacket

### Ratings

UL 1277 TC-ER  
UL DIR BUR (3 Conductors or more)  
ICEA S-73-532  
ICEA S-95-658  
UL1685-FT-4/IEEE 1202  
ICEA S T-29-520  
XHHW-2 VW-1 Conductors  
RoHS

### Other

Suitable for Class 1 Div 2 Hazardous locations  
Excellent Chemical, Oil and Moisture resistance  
130°C Overload Temp  
250°C Short Circuit Temp  
0.005" Helical copper tape

### Options

Tinned or Bare Strand  
Fine Strand  
1000V/2000V Insulation Upgrade

### Notes

For Cables under 0.625" 5 mil tape will increase the likelihood of shield cracking during handling cracking during handling

#### 14 AWG with Ground + 5 Mil Helical Copper Shield

Stranding: Tinned (7/22AWG) Color Code: E2  
Insulation thickness: 0.030-XHHW-2 (0.762mm)

Part Number	Conductors	Nominal	Diameter	Jacket	Thickness	Approximate	Weight
		Inch	mm	Inch	mm	lbs/1000ft	kg/km
D0914EG	9	0.613	15.570	0.062	1.575	290	432
D1214EG	12	0.683	17.348	0.062	1.575	360	536

#### 12 AWG with Ground + 5 Mil Helical Copper Shield

Stranding: Tinned (7/20AWG) Color Code: E2  
Insulation thickness: 0.030-XHHW-2 (0.762mm)

Part Number	Conductors	Nominal	Diameter	Jacket	Thickness	Approximate	Weight
		Inch	mm	Inch	mm	lbs/1000ft	kg/km
D0912EG	9	0.678	17.221	0.062	1.575	380	565
D1212EG	12	0.757	19.228	0.062	1.575	476	708

#### 10 AWG with Ground + 5 Mil Helical Copper Shield

Stranding: Tinned (7/18AWG) Color Code: E2  
Insulation thickness: 0.030-XHHW-2 (0.762mm)

Part Number	Conductors	Nominal	Diameter	Jacket	Thickness	Approximate	Weight
		Inch	mm	Inch	mm	lbs/1000ft	kg/km
D0510EG	5	0.606	15.392	0.062	1.575	338	503
D0710EG	7	0.658	16.713	0.062	1.575	428	637
D0910EG	9	0.765	19.431	0.062	1.575	529	787
D1210EG	12	0.901	22.885	0.084	2.134	705	1049

#### 8 AWG with Ground + 5 Mil Helical Copper Shield

Stranding: Tinned (7/16AWG) Color Code: M4  
Insulation thickness: 0.045-XHHW-2 (1.143mm)

Part Number	Conductors	Nominal	Diameter	Jacket	Thickness	Approximate	Weight
		Inch	mm	Inch	mm	lbs/1000ft	kg/km
D0208FG	2	0.603	15.316	0.062	1.575	270	402
D0308FG	3	0.638	16.205	0.062	1.575	344	512
D0408FG	4	0.698	17.729	0.062	1.575	422	628

# Belden XLPE/PVC 5 Mil Helical Copper Tape Series (cont.)

600 V Shielded, XLPE-PVC Substation Control Cable

## 6 AWG with Ground + 5 Mil Helical Copper Shield

Stranding: Tinned (7/14AWG) Color Code: M4  
 Insulation thickness: 0.045-XHHW-2 (1.143mm)

Part Number	Conductors	Nominal	Diameter	Jacket	Thickness	Approximate	Weight
		Inch	mm	Inch	mm	lbs/1000ft	kg/km
D0206FG	2	0.683	17.348	0.062	1.575	374	557
D0206FG	3	0.724	18.390	0.062	1.575	483	719
D0206FG	4	0.795	20.193	0.062	1.575	599	891

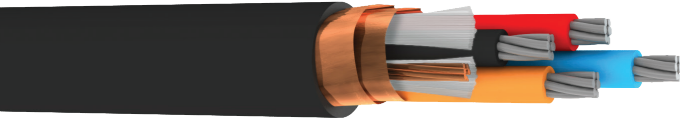
## 4 AWG with Ground + 5 Mil Helical Copper Shield

Stranding: Tinned (7/12AWG) Color Code: M4  
 Insulation thickness: 0.045-XHHW-2 (1.143mm)

Part Number	Conductors	Nominal	Diameter	Jacket	Thickness	Approximate	Weight
		Inch	mm	Inch	mm	lbs/1000ft	kg/km
D0204FG	2	0.768	19.507	0.062	1.575	492	732
D0204FG	3	0.816	20.726	0.062	1.575	654	973
D0204FG	4	0.941	23.901	0.084	2.134	860	1280

# Belden XLPE/LSZH 5 Mil Helical Copper Tape Series

600 V Shielded, XLPE-LSZH Substation Control Cable



5 Mil Copper tape shields provide superior resistance to shield cracking during installation and handling, providing more effective installed performance for smaller cables

UL 1277 TC-ER XLPE/LSZH  
FT4/1202/NFPA130

### Operating Temperature

-30 to 90°C Wet/Dry

### Conductor Color Coding

ICEA S-73-532 TABLE E2 - 10 AWG AND SMALLER

ICEA S-73-532 TABLE M4 - 8 AWG AND LARGER

BLACK JACKET (OTHER COLORS AVAILABLE)

### Materials

Class B tinned copper conductors  
XLPE-VW-1 insulation meeting XHHW-2 Heat, moisture, oil and sunlight resistant LSZH jacket

### Ratings

UL 1277 TC-ER  
UL DIR BUR (3 Conductors or more)  
ICEA S-73-532  
ICEA S-95-658  
XHHW-2 VW-1 Conductors  
RoHS  
TC-LS  
NFPA 130 Compliance  
FT4/IEEE1202

### Other

Suitable for Class 1 Div 2 Hazardous locations  
130°C Overload Temp  
250°C Short Circuit Temp  
0.005" Helical copper tape

### Options

Tinned or Bare Strand  
Fine Strand  
Braid or Foil Shields  
Custom Colors and Print  
1000V/2000V Insulation Upgrade

### Notes

For Cables under 0.625" 5 mil tape will increase the likelihood of shield cracking during handling

#### 14 AWG with Ground + 5 Mil Helical Copper Shield

Stranding: Tinned (7/22AWG) Color Code: E2  
Insulation thickness: 0.030-XHHW-2 (0.762mm)

Part Number	Conductors	Nominal	Diameter	Jacket	Thickness	Approximate	Weight
		Inch	mm	Inch	mm	lbs/1000ft	kg/km
T0914EG	9	0.613	15.570	0.062	1.575	293	436
T1214EG	12	0.683	17.348	0.062	1.575	364	542

#### 12 AWG with Ground + 5 Mil Helical Copper Shield

Stranding: Tinned (7/20AWG) Color Code: E2  
Insulation thickness: 0.030-XHHW-2 (0.762mm)

Part Number	Conductors	Nominal	Diameter	Jacket	Thickness	Approximate	Weight
		Inch	mm	Inch	mm	lbs/1000ft	kg/km
T0912EG	9	0.678	17.221	0.062	1.575	384	571
T1212EG	12	0.757	19.228	0.062	1.575	480	714

#### 10 AWG with Ground + 5 Mil Helical Copper Shield

Stranding: Tinned (7/18AWG) Color Code: E2  
Insulation thickness: 0.030-XHHW-2 (0.762mm)

Part Number	Conductors	Nominal	Diameter	Jacket	Thickness	Approximate	Weight
		Inch	mm	Inch	mm	lbs/1000ft	kg/km
T0510EG	5	0.606	15.392	0.062	1.575	341	507
T0710EG	7	0.658	16.713	0.062	1.575	431	641
T0910EG	9	0.765	19.431	0.062	1.575	534	795
T1210EG	12	0.901	22.885	0.084	2.134	712	1060

#### 8 AWG with Ground + 5 Mil Helical Copper Shield

Stranding: Tinned (7/16AWG) Color Code: M4  
Insulation thickness: 0.045-XHHW-2 (1.143mm)

Part Number	Conductors	Nominal	Diameter	Jacket	Thickness	Approximate	Weight
		Inch	mm	Inch	mm	lbs/1000ft	kg/km
T0208FG	2	0.603	15.316	0.062	1.575	274	408
T0208FG	3	0.638	16.205	0.062	1.575	347	516
T0208FG	4	0.698	17.729	0.062	1.575	426	634



# Belden XLPE/LSZH 5 Mil Helical Copper Tape Series (cont.)

600 V Shielded, XLPE-LSZH Substation Control Cable

## 6 AWG with Ground + 5 Mil Helical Copper Shield

Stranding: Tinned (7/14AWG) Color Code: M4  
Insulation thickness: 0.045-XHHW-2 (1.143mm)

Part Number	Conductors	Nominal	Diameter	Jacket	Thickness	Approximate	Weight
		Inch	mm	Inch	mm	lbs/1000ft	kg/km
T0206FG	2	0.683	17.348	0.062	1.575	378	563
T0206FG	3	0.724	18.390	0.062	1.575	487	725
T0206FG	4	0.795	20.193	0.062	1.575	603	897

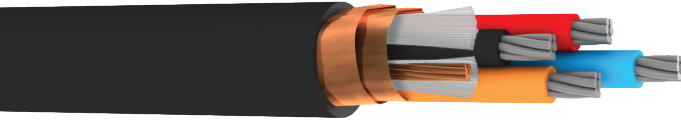
## 4 AWG with Ground + 5 Mil Helical Copper Shield

Stranding: Tinned (7/12AWG) Color Code: M4  
Insulation thickness: 0.045-XHHW-2 (1.143mm)

Part Number	Conductors	Nominal	Diameter	Jacket	Thickness	Approximate	Weight
		Inch	mm	Inch	mm	lbs/1000ft	kg/km
T0204FG	2	0.768	19.507	0.062	1.575	497	740
T0204FG	3	0.816	20.726	0.062	1.575	658	979
T0204FG	4	0.941	23.901	0.084	2.134	866	1289

# Belden XLPE/X-LINK LSZH 5 Mil Helical Copper Tape Series

## 600 V Shielded, XLPE-X-Link Substation Control Cable



5 Mil Copper tape shields provide superior resistance to shield cracking during installation and handling, providing more effective installed performance for smaller cables

UL 1277 TC-ER XLPE/CPE  
FT4/1202

### Operating Temperature

-40 to 90°C Wet/Dry

### Conductor Color Coding

ICEA S-73-532 TABLE E2 - 10 AWG AND SMALLER

ICEA S-73-532 TABLE M4 - 8 AWG AND LARGER

BLACK JACKET (OTHER COLORS AVAILABLE)

### Materials

Class B tinned copper conductors  
XLPE-VW-1 insulation meeting XHHW-2 Heat, moisture, oil and sunlight resistant thermoset LSZH jacket

### Ratings

UL 1277 TC-ER  
UL DIR BUR (3 Conductors or more)  
UL OIL RES I/II  
ICEA S-73-532  
UL1685-FT-4/IEEE 1202  
ICEA S T-29-520  
XHHW-2 VW-1 Conductors  
RoHS

### Other

Suitable for Class 1 Div 2 Hazardous locations  
Excellent Chemical, Oil and Moisture resistance  
130°C Overload Temp  
250°C Short Circuit Temp  
0.005" Helically applied copper tape

### Options

Tinned or Bare Strand  
Fine Strand  
1000V/2000V Insulation Upgrade

### Notes

For Cables under 0.625" 5 mil tape will increase the likelihood of shield cracking during handling

#### 14 AWG with Ground + 5 Mil Helical Copper Shield

Stranding: Tinned (7/22AWG) Color Code: E2  
Insulation thickness: 0.030-XHHW-2 (0.762mm)

Part Number	Conductors	Nominal	Diameter	Jacket	Thickness	Approximate	Weight
		Inch	mm	Inch	mm	lbs/1000ft	kg/km
Z0914EG	9	0.613	15.570	0.062	1.575	299	445
Z1214EG	12	0.683	17.348	0.062	1.575	370	551

#### 12 AWG with Ground + 5 Mil Helical Copper Shield

Stranding: Tinned (7/20AWG) Color Code: E2  
Insulation thickness: 0.030-XHHW-2 (0.762mm)

Part Number	Conductors	Nominal	Diameter	Jacket	Thickness	Approximate	Weight
		Inch	mm	Inch	mm	lbs/1000ft	kg/km
Z0912EG	9	0.678	17.221	0.062	1.575	390	580
Z1212EG	12	0.757	19.228	0.062	1.575	487	725

#### 10 AWG with Ground + 5 Mil Helical Copper Shield

Stranding: Tinned (7/18AWG) Color Code: E2  
Insulation thickness: 0.030-XHHW-2 (0.762mm)

Part Number	Conductors	Nominal	Diameter	Jacket	Thickness	Approximate	Weight
		Inch	mm	Inch	mm	lbs/1000ft	kg/km
Z0510EG	5	0.606	15.392	0.062	1.575	346	515
Z0710EG	7	0.658	16.713	0.062	1.575	438	652
Z0910EG	9	0.765	19.431	0.062	1.575	541	805
Z1210EG	12	0.901	22.885	0.084	2.134	723	1076

#### 8 AWG with Ground + 5 Mil Helical Copper Shield

Stranding: Tinned (7/16AWG) Color Code: M4  
Insulation thickness: 0.045-XHHW-2 (1.143mm)

Part Number	Conductors	Nominal	Diameter	Jacket	Thickness	Approximate	Weight
		Inch	mm	Inch	mm	lbs/1000ft	kg/km
Z0208FG	2	0.603	15.316	0.062	1.575	279	415
Z0208FG	3	0.638	16.205	0.062	1.575	353	525
Z0208FG	4	0.698	17.729	0.062	1.575	433	644

# Belden XLPE/X-LINK LSZH 5 Mil Helical Copper Tape Series (cont.)

600 V Shielded, XLPE-X-link Substation Control Cable

**6 AWG with Ground + 5 Mil Helical Copper Shield**

Stranding: Tinned (7/14AWG) Color Code: M4  
Insulation thickness: 0.045-XHHW-2 (1.143mm)

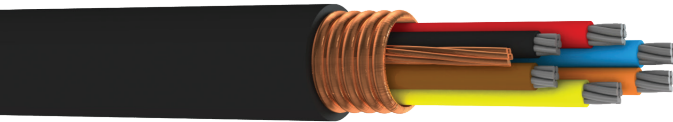
Part Number	Conductors	Nominal	Diameter	Jacket	Thickness	Approximate	Weight
		Inch	mm	Inch	mm	lbs/1000ft	kg/km
T0206FG	2	0.683	17.348	0.062	1.575	384	571
T0206FG	3	0.724	18.390	0.062	1.575	494	735
T0206FG	4	0.795	20.193	0.062	1.575	610	908

**4 AWG with Ground + 5 Mil Helical Copper Shield**

Stranding: Tinned (7/12AWG) Color Code: M4  
Insulation thickness: 0.045-XHHW-2 (1.143mm)

Part Number	Conductors	Nominal	Diameter	Jacket	Thickness	Approximate	Weight
		Inch	mm	Inch	mm	lbs/1000ft	kg/km
Z0204FG	2	0.768	19.507	0.062	1.575	504	750
Z0204FG	3	0.816	20.726	0.062	1.575	666	991
Z0204FG	4	0.941	23.901	0.084	2.134	878	1307

## Belden XLPE/CPE 5Mil LCS Shielded 600 V Shielded, XLPE-CPE Substation Control Cable



5 Mil Longitudinally applied Corrugated Copper tape shields provide a smooth cable finish and superior roundness for superior sealing in glands

UL 1277 TC-ER XLPE/CPE  
FT4/1202

### Operating Temperature

90°C Wet/Dry

-40° Cold Bend

### Conductor Color Coding

ICEA S-73-532 TABLE E2 - 10 AWG AND SMALLER

ICEA S-73-532 TABLE M4 - 8 AWG AND LARGER

BLACK JACKET (OTHER COLORS AVAILABLE)

### Materials

Class B tinned copper conductors

XLPE-VW-1 insulation meeting XHHW-2

Heat, moisture, oil and sunlight resistant CPE jacket

### Ratings

UL 1277 TC-ER

UL DIR BUR (3 Conductors or more)

UL OIL RES I/II

ICEA S-73-532

ICEA S-95-658

UL1685-FT-4/IEEE 1202

ICEA S T-29-520

XHHW-2 VW-1 Conductors

RoHS

### Other

Suitable for Class 1 Div 2 Hazardous locations

Excellent Chemical, Oil and Moisture resistance

130°C Overload Temp

250°C Short Circuit Temp

0.005" Longitudinally applied and corrugated copper tape

### Options

Tinned or Bare Strand

Fine Strand

1000V/2000V Insulation Upgrade

### Notes

For Cables under 0.625" 5 mil tape will increase the likelihood of shield cracking during handling

#### 14 AWG with Ground + 5 Mil Longitudinal Copper Shield

Stranding: Tinned (7x22AWG) Color Code E2  
Insulation thickness: 0.030-XHHW-2 (0.762mm)

Part Number	Conductors	Nominal	Diameter	Jacket	Thickness	Approximate	Weight
		Inch	mm	Inch	mm	lbs/1000ft	kg/km
R0214HB	2	0.406	10.312	0.050	1.270	110	164
R0314HB	3	0.426	10.820	0.050	1.270	132	196
R0414HB	4	0.460	11.684	0.050	1.270	157	234
R0514HB	5	0.498	12.649	0.050	1.270	183	272
R0714HB	7	0.573	14.554	0.070	1.778	245	365
R0914HB	9	0.654	16.612	0.070	1.778	300	446
R1214HB	12	0.724	18.390	0.070	1.778	371	552

#### 12 AWG with Ground + 5 Mil Longitudinal Copper Shield

Stranding: Tinned (7x20AWG) Color Code E2  
Insulation thickness: 0.030-XHHW-2 (0.762mm)

Part Number	Conductors	Nominal	Diameter	Jacket	Thickness	Approximate	Weight
		Inch	mm	Inch	mm	lbs/1000ft	kg/km
R0212HB	2	0.442	11.227	0.050	1.270	138	205
R0312HB	3	0.464	11.786	0.050	1.270	169	251
R0412HB	4	0.503	12.776	0.050	1.270	203	302
R0512HB	5	0.582	14.783	0.070	1.778	256	381
R0712HB	7	0.627	15.926	0.070	1.778	318	473
R0912HB	9	0.719	18.263	0.070	1.778	391	582
R1212HB	12	0.798	20.269	0.070	1.778	488	726

#### 10 AWG with Ground + 5 Mil Longitudinal Copper Shield

Stranding: Tinned (7x18AWG) Color Code E2  
Insulation thickness: 0.030-XHHW-2 (0.762mm)

Part Number	Conductors	Nominal	Diameter	Jacket	Thickness	Approximate	Weight
		Inch	mm	Inch	mm	lbs/1000ft	kg/km
R0210HB	2	0.490	12.446	0.050	1.270	185	275
R0310HB	3	0.516	13.106	0.050	1.270	230	342
R0410HB	4	0.597	15.164	0.070	1.778	297	442
R0510HB	5	0.647	16.434	0.070	1.778	348	518
R0710HB	7	0.699	17.755	0.070	1.778	439	653
R0910HB	9	0.806	20.472	0.070	1.778	541	805
R1210HB	12	0.946	24.028	0.090	2.286	722	1074

# Belden XLPE/CPE 5Mil LCS Shielded (cont.)

## 600 V Shielded, XLPE-CPE Substation Control Cable

### 8 AWG with Ground + 5 Mil Longitudinal Copper Shield

Stranding: Tinned(7x16AWG) Color Code M4  
 Insulation thickness: 0.045-XHHW-2 (1.143mm)

Part Number	Conductors	Nominal	Diameter	Jacket	Thickness	Approximate	Weight
		Inch	mm	Inch	mm	lbs/1000ft	kg/km
R0208IB	2	0.644	16.358	0.070	1.778	280	417
R0308IB	3	0.679	17.247	0.070	1.778	354	527
R0408IB	4	0.739	18.771	0.070	1.778	433	644

### 6 AWG with Ground + 5 Mil Longitudinal Copper Shield

Stranding: Tinned(7x14AWG) Color Code M4  
 Insulation thickness: 0.045-XHHW-2 (1.143mm)

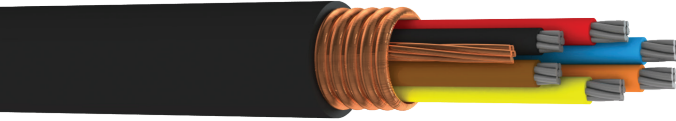
Part Number	Conductors	Nominal	Diameter	Jacket	Thickness	Approximate	Weight
		Inch	mm	Inch	mm	lbs/1000ft	kg/km
R0206IB	2	0.724	18.390	0.070	1.778	385	573
R0306IB	3	0.765	19.431	0.070	1.778	495	737
R0406IB	4	0.836	21.234	0.070	1.778	611	909

### 4 AWG with Ground + 5 Mil Longitudinal Copper Shield

Stranding: Tinned (7/12AWG) Color Code: M4  
 Insulation thickness: 0.045-XHHW-2 (1.143mm)

Part Number	Conductors	Nominal	Diameter	Jacket	Thickness	Approximate	Weight
		Inch	mm	Inch	mm	lbs/1000ft	kg/km
R0204IB	2	0.809	20.549	0.070	1.778	504	750
R0304IB	3	0.905	22.987	0.090	2.286	705	1049
R0404IB	4	0.986	25.044	0.090	2.286	877	1305

# Belden FR-EP/CPE 5Mil LCS Shielded 600 V Shielded, FR-EP/CPE Substation Control Cable



5 Mil Longitudinally applied Corrugated Copper tape shields provide a smooth cable finish and superior roundness for superior sealing in glands

UL 1277 TC-ER XLPE/CPE FT4/1202

### Operating Temperature

90°C Wet/Dry  
-40° Cold Bend

### Conductor Color Coding

ICEA S-73-532 TABLE E2 - 10 AWG AND SMALLER

ICEA S-73-532 TABLE M4 - 8 AWG AND LARGER

BLACK JACKET (OTHER COLORS AVAILABLE)

### Materials

Class B tinned copper conductors  
EPR-VW-1 insulation meeting XHHW-2 Heat, moisture, oil and sunlight resistant CPE jacket

### Ratings

UL 1277 TC-ER  
UL DIR BUR (3 Conductors or more)  
UL OIL RES I/II  
ICEA S-73-532  
ICEA S-95-658  
UL1685-FT-4/IEEE 1202  
ICEA S T-29-520  
XHHW-2 VW-1 Conductors  
RoHS

### Other

Suitable for Class 1 Div 2 Hazardous locations  
Excellent Chemical, Oil and Moisture resistance  
130°C Overload Temp  
250°C Short Circuit Temp  
0.005" Longitudinally applied and corrugated copper tape

### Options

Tinned or Bare Strand  
Fine Strand  
1000V/2000V Insulation Upgrade

### Notes

For Cables under 0.625" 5 mil tape will increase the likelihood of shield cracking during handling

#### 14 AWG with Ground + 5 Mil Longitudinal Copper Shield

Stranding: Tinned (7/22AWG) Color Code: E2  
Insulation thickness: 0.030-XHHW-2 (0.762mm)

Part Number	Conductors	Nominal	Diameter	Jacket	Thickness	Approximate	Weight
		Inch	mm	Inch	mm	lbs/1000ft	kg/km
P0214HB	2	0.406	10.312	0.050	1.270	110	164
P0314HB	3	0.426	10.820	0.050	1.270	132	196
P0414HB	4	0.460	11.684	0.050	1.270	157	234
P0514HB	5	0.498	12.649	0.050	1.270	183	272
P0714HB	7	0.573	14.554	0.070	1.778	245	365
P0914HB	9	0.654	16.612	0.070	1.778	300	446
P1214HB	12	0.724	18.390	0.070	1.778	371	552

#### 12 AWG with Ground + 5 Mil Longitudinal Copper Shield

Stranding: Tinned (7/20AWG) Color Code: E2  
Insulation thickness: 0.030-XHHW-2 (0.762mm)

Part Number	Conductors	Nominal	Diameter	Jacket	Thickness	Approximate	Weight
		Inch	mm	Inch	mm	lbs/1000ft	kg/km
P0212HB	2	0.442	11.227	0.050	1.270	138	205
P0312HB	3	0.464	11.786	0.050	1.270	169	251
P0412HB	4	0.503	12.776	0.050	1.270	203	302
P0512HB	5	0.582	14.783	0.070	1.778	256	381
P0712HB	7	0.627	15.926	0.070	1.778	318	473
P0912HB	9	0.719	18.263	0.070	1.778	391	582
P1212HB	12	0.798	20.269	0.070	1.778	488	726

#### 10 AWG with Ground + 5 Mil Longitudinal Copper Shield

Stranding: Tinned (7/18AWG) Color Code: E2  
Insulation thickness: 0.030-XHHW-2 (0.762mm)

Part Number	Conductors	Nominal	Diameter	Jacket	Thickness	Approximate	Weight
		Inch	mm	Inch	mm	lbs/1000ft	kg/km
P0210HB	2	0.490	12.446	0.050	1.270	185	275
P0310HB	3	0.516	13.106	0.050	1.270	230	342
P0410HB	4	0.597	15.164	0.070	1.778	297	442
P0510HB	5	0.647	16.434	0.070	1.778	348	518
P0710HB	7	0.699	17.755	0.070	1.778	439	653
P0910HB	9	0.806	20.472	0.070	1.778	541	805
P1210HB	12	0.946	24.028	0.090	2.286	722	1074

# Belden FR-EP/CPE 5Mil LCS Shielded (cont.)

## 600 V Shielded, FR-EP/CPE Substation Control Cable

### 8 AWG with Ground + 5 Mil Longitudinal Copper Shield

Stranding: Tinned (7/16AWG) Color Code: M4  
 Insulation thickness: 0.045-XHHW-2 (1.143mm)

Part Number	Conductors	Nominal	Diameter	Jacket	Thickness	Approximate	Weight
		Inch	mm	Inch	mm	lbs/1000ft	kg/km
Q0208IB	2	0.644	16.358	0.070	1.778	280	417
Q0308IB	3	0.679	17.247	0.070	1.778	354	527
Q0308IB	4	0.739	18.771	0.070	1.778	433	644

### 6 AWG with Ground + 5 Mil Longitudinal Copper Shield

Stranding: Tinned (7/14AWG) Color Code: M4  
 Insulation thickness: 0.045-XHHW-2 (1.143mm)

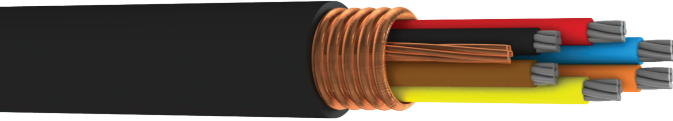
Part Number	Conductors	Nominal	Diameter	Jacket	Thickness	Approximate	Weight
		Inch	mm	Inch	mm	lbs/1000ft	kg/km
Q0206IB	2	0.724	18.390	0.070	1.778	385	573
Q0306IB	3	0.765	19.431	0.070	1.778	495	737
Q0306IB	4	0.836	21.234	0.070	1.778	611	909

### 4 AWG with Ground + 5 Mil Longitudinal Copper Shield

Stranding: Tinned (7/12AWG) Color Code: M4  
 Insulation thickness: 0.045-XHHW-2 (1.143mm)

Part Number	Conductors	Nominal	Diameter	Jacket	Thickness	Approximate	Weight
		Inch	mm	Inch	mm	lbs/1000ft	kg/km
Q0204IB	2	0.809	20.549	0.070	1.778	504	750
Q0304IB	3	0.905	22.987	0.090	2.286	705	1049
Q0304IB	4	0.986	25.044	0.090	2.286	877	1305

# Belden XLPE/PVC 5Mil LCS Shielded 600 V Shielded, XLPE-PVC Substation Control Cable



5 Mil Longitudinally applied Corrugated Copper tape shields provide a smooth cable finish and superior roundness for superior sealing in glands

UL 1277 TC-ER XLPE/PVC  
FT4/1202

### Operating Temperature

-30 to 90°C Wet/Dry

### Conductor Color Coding

ICEA S-73-532 TABLE E2 - 10 AWG AND SMALLER

ICEA S-73-532 TABLE M4 - 8 AWG AND LARGER

BLACK JACKET (OTHER COLORS AVAILABLE)

### Materials

Class B tinned copper conductors  
XLPE-VW-1 insulation meeting XHHW-2 Heat, moisture, oil and sunlight resistant PVC jacket

### Ratings

UL 1277 TC-ER  
UL DIR BUR (3 Conductors or more)  
ICEA S-73-532  
ICEA S-95-658  
UL1685-FT-4/IEEE 1202  
ICEA S T-29-520  
XHHW-2 VW-1 Conductors  
RoHS

### Other

Suitable for Class 1 Div 2 Hazardous locations  
Excellent Chemical, Oil and Moisture resistance  
130°C Overload Temp  
250°C Short Circuit Temp  
0.005" Longitudinally applied and corrugated copper tape

### Options

Tinned or Bare Strand  
Fine Strand  
1000V/2000V Insulation Upgrade

### Notes

For Cables under 0.625" 5 mil tape will increase the likelihood of shield cracking during handling

#### 14 AWG with Ground + 5 Mil Longitudinal Copper Shield

Stranding: Tinned (7/22AWG) Color Code: E2  
Insulation thickness: 0.030-XHHW-2 (0.762mm)

Part Number	Conductors	Nominal	Diameter	Jacket	Thickness	Approximate	Weight
		Inch	mm	Inch	mm	lbs/1000ft	kg/km
D0214HG	2	0.396	10.058	0.047	1.194	107	159
D0314HG	3	0.416	10.566	0.047	1.194	130	193
D0414HG	4	0.450	11.430	0.047	1.194	154	229
D0514HG	5	0.488	12.395	0.047	1.194	180	268
D0714HG	7	0.557	14.148	0.062	1.575	239	356
D0914HG	9	0.638	16.205	0.062	1.575	293	436
D1214HG	12	0.708	17.983	0.062	1.575	363	540

#### 12 AWG with Ground + 5 Mil Longitudinal Copper Shield

Stranding: Tinned (7/20AWG) Color Code: E2  
Insulation thickness: 0.030-XHHW-2 (0.762mm)

Part Number	Conductors	Nominal	Diameter	Jacket	Thickness	Approximate	Weight
		Inch	mm	Inch	mm	lbs/1000ft	kg/km
D0212HG	2	0.432	10.973	0.047	1.194	136	202
D0312HG	3	0.454	11.532	0.047	1.194	166	247
D0412HG	4	0.493	12.522	0.047	1.194	199	296
D0512HG	5	0.566	14.376	0.062	1.575	249	371
D0712HG	7	0.611	15.519	0.062	1.575	312	464
D0912HG	9	0.703	17.856	0.062	1.575	383	570
D1212HG	12	0.782	19.863	0.062	1.575	479	713

#### 10 AWG with Ground + 5 Mil Longitudinal Copper Shield

Stranding: Tinned (7/18AWG) Color Code: E2  
Insulation thickness: 0.030-XHHW-2 (0.762mm)

Part Number	Conductors	Nominal	Diameter	Jacket	Thickness	Approximate	Weight
		Inch	mm	Inch	mm	lbs/1000ft	kg/km
D0210HG	2	0.480	12.192	0.047	1.194	182	271
D0310HG	3	0.506	12.852	0.047	1.194	227	338
D0410HG	4	0.581	14.757	0.062	1.575	291	433
D0510HG	5	0.631	16.027	0.062	1.575	341	507
D0710HG	7	0.683	17.348	0.062	1.575	431	641
D0910HG	9	0.709	2.007	0.062	1.575	532	792
D1210HG	12	0.926	23.520	0.084	2.134	709	1055



# Belden XLPE/PVC 5Mil LCS Shielded (cont.)

## 600 V Shielded, XLPE-PVC Substation Control Cable

### 8 AWG with Ground + 5 Mil Longitudinal Copper Shield

Stranding: Tinned (7/16AWG) Color Code: M4  
 Insulation thickness: 0.045-XHHW-2 (1.143mm)

Part Number	Conductors	Nominal	Diameter	Jacket	Thickness	Approximate	Weight
		Inch	mm	Inch	mm	lbs/1000ft	kg/km
D0208IG	2	0.628	15.951	0.062	1.575	273	406
D0308IG	3	0.663	16.840	0.062	1.575	347	516
D0408IG	4	0.723	18.364	0.062	1.575	425	632

### 6 AWG with Ground + 5 Mil Longitudinal Copper Shield

Stranding: Tinned (7/14AWG) Color Code: M4  
 Insulation thickness: 0.045-XHHW-2 (1.143mm)

Part Number	Conductors	Nominal	Diameter	Jacket	Thickness	Approximate	Weight
		Inch	mm	Inch	mm	lbs/1000ft	kg/km
D0206IG	2	0.708	17.983	0.062	1.575	377	561
D0306IG	3	0.749	19.025	0.062	1.575	486	723
D0406IG	4	0.820	20.828	0.062	1.575	601	894

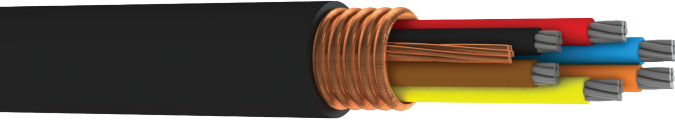
### 4 AWG with Ground + 5 Mil Longitudinal Copper Shield

Stranding: Tinned (7/12AWG) Color Code: M4  
 Insulation thickness: 0.045-XHHW-2 (1.143mm)

Part Number	Conductors	Nominal	Diameter	Jacket	Thickness	Approximate	Weight
		Inch	mm	Inch	mm	lbs/1000ft	kg/km
D0204IG	2	0.793	20.142	0.062	1.575	495	737
D0304IG	3	0.885	22.479	0.084	2.134	693	1031
D0404IG	4	0.966	24.536	0.084	2.134	864	1286

# Belden XLPE/LSZH 5Mil LCS Shielded

## 600 V Shielded, XLPE-LSZH Substation Control Cable



5 Mil Longitudinally applied Corrugated Copper tape shields provide a smooth cable finish and superior roundness for superior sealing in glands

UL 1277 TC-ER XLPE/LSZH  
FT4/1202/NFPA 130

### Operating Temperature

-30 to 90°C Wet/Dry

### Conductor Color Coding

ICEA S-73-532 TABLE E2 - 10 AWG AND SMALLER

ICEA S-73-532 TABLE M4 - 8 AWG AND LARGER

BLACK JACKET (OTHER COLORS AVAILABLE)

### Materials

Class B tinned copper conductors  
XLPE-VW-1 insulation meeting XHHW-2 Heat, moisture, oil and sunlight resistant LSZH jacket

### Ratings

UL 1277 TC-ER  
UL DIR BUR (3 Conductors or more)  
ICEA S-73-532  
ICEA S-95-658  
XHHW-2 VW-1 Conductors  
RoHS  
TC-LS  
NFPA 130 Compliance  
FT4/IEEE1202

### Other

Suitable for Class 1 Div 2 Hazardous locations  
130°C Overload Temp  
250°C Short Circuit Temp  
0.005" Longitudinally applied and corrugated copper tape

### Options

Tinned or Bare Strand  
Fine Strand  
Braid or Foil Shields  
Custom Colors and Print  
1000V/2000V Insulation Upgrade

### Notes

For Cables under 0.625" 5 mil tape will increase the likelihood of shield cracking during handling

#### 14 AWG with Ground + 5 Mil Longitudinal Copper Shield

Stranding: Tinned (7/22AWG) Color Code: E2  
Insulation thickness: 0.030-XHHW-2 (0.762mm)

Part Number	Conductors	Nominal	Diameter	Jacket	Thickness	Approximate	Weight
		Inch	mm	Inch	mm	lbs/1000ft	kg/km
T0214HG	2	0.396	10.058	0.047	1.194	109	162
T0314HG	3	0.416	10.566	0.047	1.194	131	195
T0414HG	4	0.450	11.430	0.047	1.194	156	232
T0514HG	5	0.488	12.395	0.047	1.194	182	271
T0714HG	7	0.557	14.148	0.062	1.575	242	360
T0914HG	9	0.638	16.205	0.062	1.575	296	440
T1214HG	12	0.708	17.983	0.062	1.575	367	546

#### 12 AWG with Ground + 5 Mil Longitudinal Copper Shield

Stranding: Tinned (7/20AWG) Color Code: E2  
Insulation thickness: 0.030-XHHW-2 (0.762mm)

Part Number	Conductors	Nominal	Diameter	Jacket	Thickness	Approximate	Weight
		Inch	mm	Inch	mm	lbs/1000ft	kg/km
T0212HG	2	0.432	10.973	0.047	1.194	137	204
T0312HG	3	0.454	11.532	0.047	1.194	168	250
T0412HG	4	0.493	12.522	0.047	1.194	201	299
T0512HG	5	0.566	14.376	0.062	1.575	252	375
T0712HG	7	0.611	15.519	0.062	1.575	315	469
T0912HG	9	0.703	17.856	0.062	1.575	387	576
T1212HG	12	0.782	19.863	0.062	1.575	483	719

#### 10 AWG with Ground + 5 Mil Longitudinal Copper Shield

Stranding: Tinned (7/18AWG) Color Code: E2  
Insulation thickness: 0.030-XHHW-2 (0.762mm)

Part Number	Conductors	Nominal	Diameter	Jacket	Thickness	Approximate	Weight
		Inch	mm	Inch	mm	lbs/1000ft	kg/km
T0210HG	2	0.480	12.192	0.047	1.194	184	274
T0310HG	3	0.506	12.852	0.047	1.194	229	341
T0410HG	4	0.581	14.757	0.062	1.575	294	438
T0510HG	5	0.631	16.027	0.062	1.575	344	512
T0710HG	7	0.683	17.348	0.062	1.575	435	647
T0910HG	9	0.709	2.007	0.062	1.575	537	799
T1210HG	12	0.926	23.520	0.084	2.134	716	1065

# Belden XLPE/LSZH 5Mil LCS Shielded (cont.)

## 600 V Shielded, XLPE-LSZH Substation Control Cable

### 8 AWG with Ground + 5 Mil Longitudinal Copper Shield

Stranding: Tinned (7/16AWG) Color Code: M4  
 Insulation thickness: 0.045-XHHW-2 (1.143mm)

Part Number	Conductors	Nominal	Diameter	Jacket	Thickness	Approximate	Weight
		Inch	mm	Inch	mm	lbs/1000ft	kg/km
T0208IG	2	0.628	15.951	0.062	1.575	277	412
T0308IG	3	0.663	16.840	0.062	1.575	350	521
T0408IG	4	0.723	18.364	0.062	1.575	429	638

### 6 AWG with Ground + 5 Mil Longitudinal Copper Shield

Stranding: Tinned (7/14AWG) Color Code: M4  
 Insulation thickness: 0.045-XHHW-2 (1.143mm)

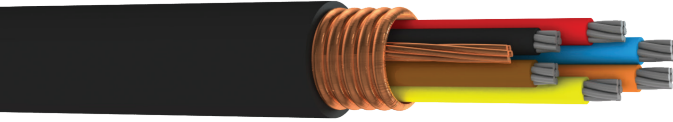
Part Number	Conductors	Nominal	Diameter	Jacket	Thickness	Approximate	Weight
		Inch	mm	Inch	mm	lbs/1000ft	kg/km
T0206IG	2	0.708	17.983	0.062	1.575	381	567
T0306IG	3	0.749	19.025	0.062	1.575	490	729
T0406IG	4	0.820	20.828	0.062	1.575	606	902

### 4 AWG with Ground + 5 Mil Longitudinal Copper Shield

Stranding: Tinned (7/12AWG) Color Code: M4  
 Insulation thickness: 0.045-XHHW-2 (1.143mm)

Part Number	Conductors	Nominal	Diameter	Jacket	Thickness	Approximate	Weight
		Inch	mm	Inch	mm	lbs/1000ft	kg/km
T0204IG	2	0.793	20.142	0.062	1.575	500	744
T0304IG	3	0.885	22.479	0.084	2.134	700	1042
T0404IG	4	0.966	24.536	0.084	2.134	871	1296

## Belden XLPE/X-LINK LSZH 5Mil LCS Shielded 600 V Shielded, XLPE-X-Link Substation Control Cable



5 Mil Longitudinally applied Corrugated Copper tape shields provide a smooth cable finish and superior roundness for superior sealing in glands

UL 1277 TC-ER XLPE/XL-LSZH FT4/1202

### Operating Temperature

-40 to 90°C Wet/Dry

### Conductor Color Coding

ICEA S-73-532 TABLE E2 - 10 AWG AND SMALLER

ICEA S-73-532 TABLE M4 - 8 AWG AND LARGER

BLACK JACKET (OTHER COLORS AVAILABLE)

### Materials

Class B tinned copper conductors

XLPE-VW-1 insulation meeting XHHW-2 Heat, moisture, oil and sunlight resistant thermoset LSZH jacket

### Ratings

UL 1277 TC-ER

UL DIR BUR (3 Conductors or more)

UL OIL RES I/II

ICEA S-73-532

UL1685-FT-4/IEEE 1202

ICEA S T-29-520

XHHW-2 VW-1 Conductors

RoHS

### Other

Suitable for Class 1 Div 2 Hazardous locations

Excellent Chemical, Oil and Moisture resistance

130°C Overload Temp

250°C Short Circuit Temp

0.005" Longitudinally applied corrugated copper

### Options

Tinned or Bare Strand

Fine Strand

1000V/2000V Insulation Upgrade

### Notes

For Cables under 0.625" 5 mil tape will increase the likelihood of shield cracking during handling

#### 14 AWG with Ground + 5 Mil Longitudinal Copper Shield

Stranding: Tinned (7/22AWG) Color Code: E2  
Insulation thickness: 0.030-XHHW-2 (0.762mm)

Part Number	Conductors	Nominal	Diameter	Jacket	Thickness	Approximate	Weight
		Inch	mm	Inch	mm	lbs/1000ft	kg/km
Z0214HG	2	0.396	10.058	0.047	1.194	112	167
Z0314HG	3	0.416	10.566	0.047	1.194	134	199
Z0414HG	4	0.450	11.430	0.047	1.194	159	237
Z0514HG	5	0.488	12.395	0.047	1.194	185	275
Z0714HG	7	0.557	14.148	0.062	1.575	247	368
Z0914HG	9	0.638	16.205	0.062	1.575	302	449
Z1214HG	12	0.708	17.983	0.062	1.575	374	557

#### 12 AWG with Ground + 5 Mil Longitudinal Copper Shield

Stranding: Tinned (7/20AWG) Color Code: E2  
Insulation thickness: 0.030-XHHW-2 (0.762mm)

Part Number	Conductors	Nominal	Diameter	Jacket	Thickness	Approximate	Weight
		Inch	mm	Inch	mm	lbs/1000ft	kg/km
Z0212HG	2	0.432	10.973	0.047	1.194	140	208
Z0312HG	3	0.454	11.532	0.047	1.194	171	254
Z0412HG	4	0.493	12.522	0.047	1.194	205	305
Z0512HG	5	0.566	14.376	0.062	1.575	257	382
Z0712HG	7	0.611	15.519	0.062	1.575	320	476
Z0912HG	9	0.703	17.856	0.062	1.575	394	586
Z1212HG	12	0.782	19.863	0.062	1.575	490	729

#### 10 AWG with Ground + 5 Mil Longitudinal Copper Shield

Stranding: Tinned (7/18AWG) Color Code: E2  
Insulation thickness: 0.030-XHHW-2 (0.762mm)

Part Number	Conductors	Nominal	Diameter	Jacket	Thickness	Approximate	Weight
		Inch	mm	Inch	mm	lbs/1000ft	kg/km
Z0210HG	2	0.480	12.192	0.047	1.194	187	278
Z0310HG	3	0.506	12.852	0.047	1.194	232	345
Z0410HG	4	0.581	14.757	0.062	1.575	299	445
Z0510HG	5	0.631	16.027	0.062	1.575	350	521
Z0710HG	7	0.683	17.348	0.062	1.575	441	656
Z0910HG	9	0.079	2.007	0.062	1.575	544	810
Z1210HG	12	0.926	23.520	0.084	2.134	727	1082

# Belden XLPE/X-LINK LSZH 5Mil LCS Shielded (cont.)

600 V Shielded, XLPE-X-Link Substation Control Cable

### 8 AWG with Ground + 5 Mil Longitudinal Copper Shield

Stranding: Tinned (7/16AWG) Color Code: M4  
Insulation thickness: 0.045-XHHW-2 (1.143mm)

Part Number	Conductors	Nominal	Diameter	Jacket	Thickness	Approximate	Weight
		Inch	mm	Inch	mm	lbs/1000ft	kg/km
Z0208IG	2	0.628	15.951	0.062	1.575	282	420
Z0308IG	3	0.663	16.840	0.062	1.575	357	531
Z0408IG	4	0.723	18.364	0.062	1.575	436	649

### 6 AWG with Ground + 5 Mil Longitudinal Copper Shield

Stranding: Tinned (7/14AWG) Color Code: M4  
Insulation thickness: 0.045-XHHW-2 (1.143mm)

Part Number	Conductors	Nominal	Diameter	Jacket	Thickness	Approximate	Weight
		Inch	mm	Inch	mm	lbs/1000ft	kg/km
Z0206IG	2	0.708	17.983	0.062	1.575	388	577
Z0306IG	3	0.749	19.025	0.062	1.575	497	740
Z0406IG	4	0.820	20.828	0.062	1.575	614	914

### 4 AWG with Ground + 5 Mil Longitudinal Copper Shield

Stranding: Tinned (7/12AWG) Color Code: M4  
Insulation thickness: 0.045-XHHW-2 (1.143mm)

Part Number	Conductors	Nominal	Diameter	Jacket	Thickness	Approximate	Weight
		Inch	mm	Inch	mm	lbs/1000ft	kg/km
Z0204IG	2	0.793	20.142	0.062	1.575	507	754
Z0304IG	3	0.885	22.479	0.084	2.134	711	1058
Z0404IG	4	0.966	24.536	0.084	2.134	883	1314







## About Belden

Belden Inc., a global leader in high quality, end-to-end signal transmission solutions, delivers a comprehensive product portfolio designed to meet the mission-critical network infrastructure needs of industrial, enterprise and broadcast markets. With innovative solutions targeted at reliable and secure transmission of rapidly growing amounts of data, audio and video needed for today's applications, Belden is at the center of the global transformation to a connected world. Founded in 1902, the company is headquartered in St. Louis, USA, and has manufacturing capabilities in North and South America, Europe and Asia.

For more information, visit us at:  
[www.belden.com](http://www.belden.com)  
[www.beldensolutions.com](http://www.beldensolutions.com)  
follow us on Twitter @BeldenIND

1-800-BELDEN1

[www.belden.com](http://www.belden.com)

Belden, Belden Sending All The Right Signals, GarrettCom, Hirschmann, Lumberg Automation, Tofino Security and the Belden logo are trademarks or registered trademarks of Belden Inc. or its affiliated companies in the United States and other jurisdictions. Belden and other parties may also have trademark rights in other terms used herein.

©Copyright 2018, Belden Inc.

SUBSTATION-CATALOG\_CA\_INCA\_BDC\_0318\_ENG

**Be certain.  
Belden.**