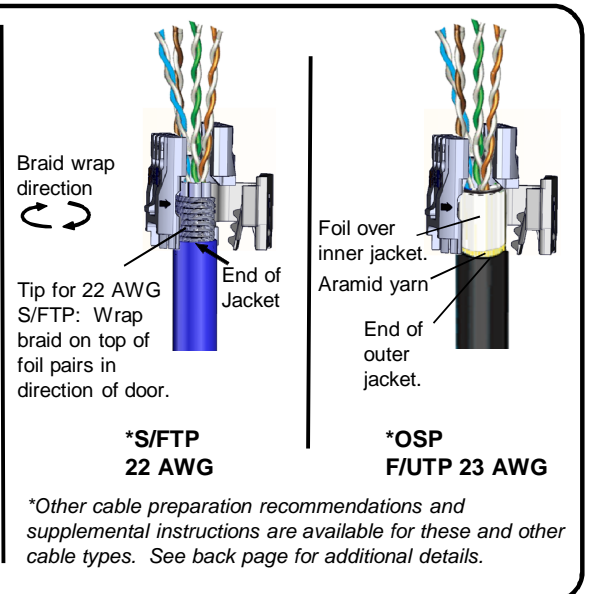
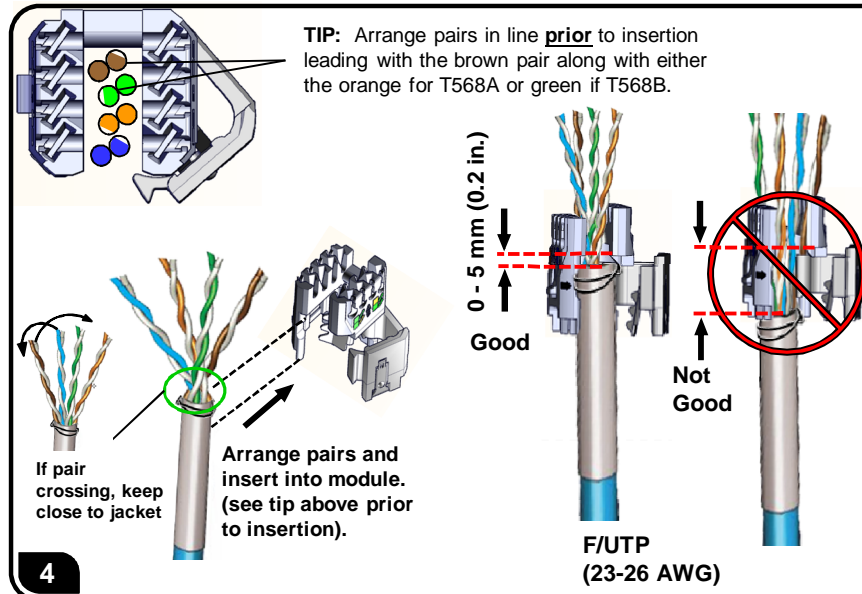
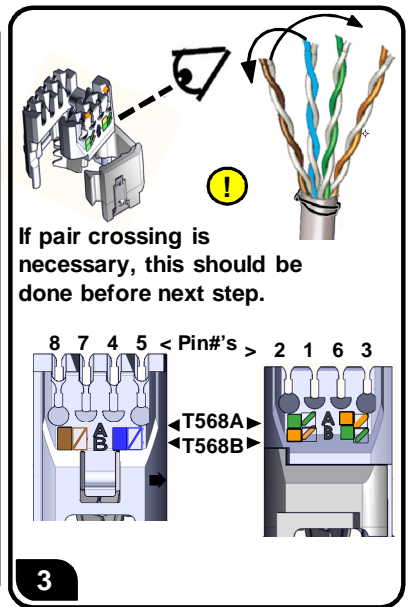
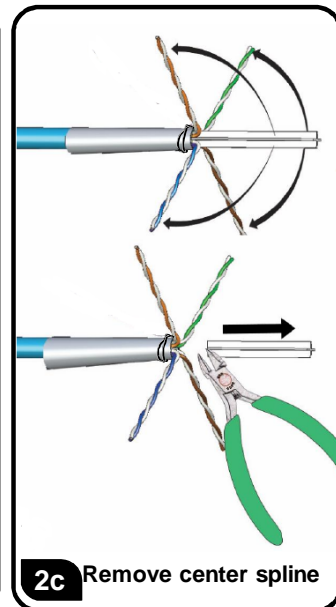
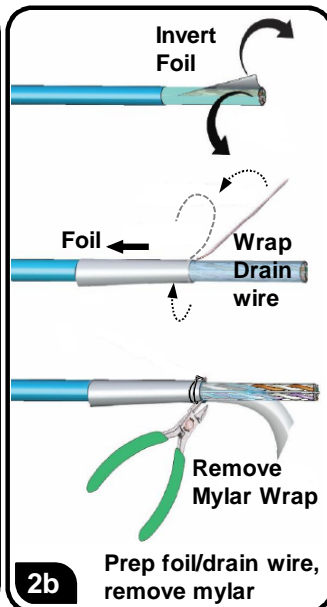
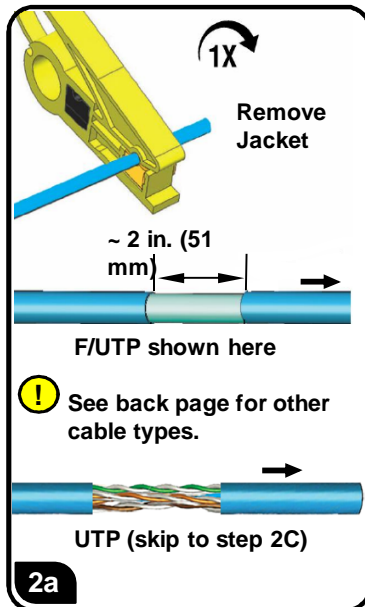
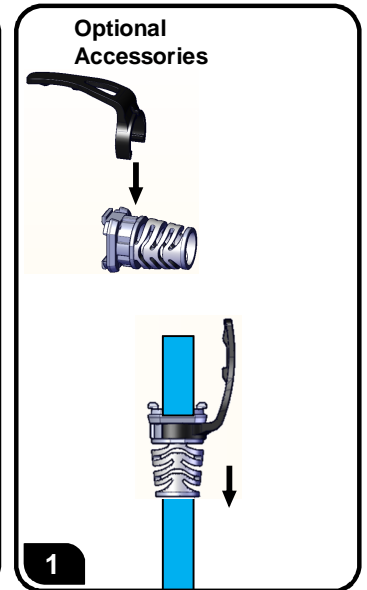
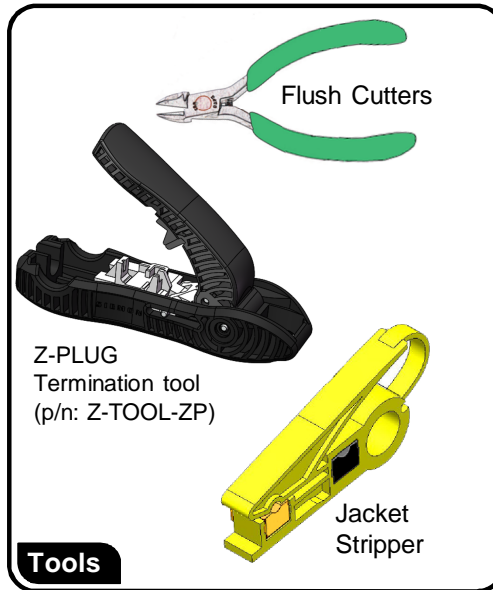
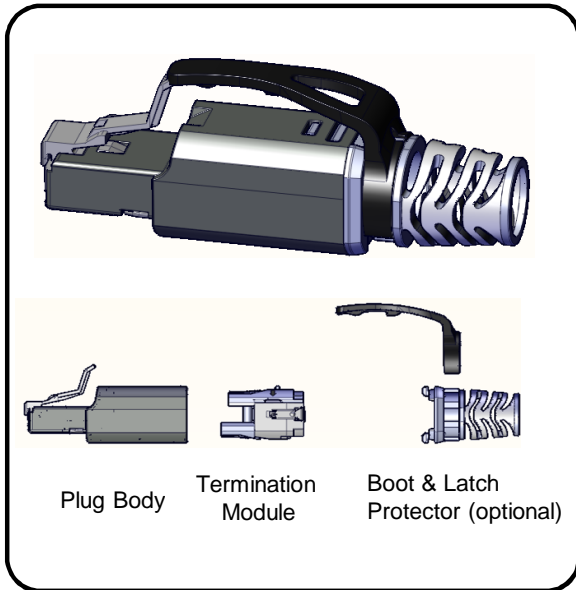


# Z-PLUG Termination Instructions



# Z-PLUG Termination Instructions

**5**

1 Press

Click

Door

2 OR

Close door with fingers or with tool

Insert onto matching shape with door side up.

2

*Tip for larger OD cables: Press to seat before closing door.*

**6**

Lace all four pairs\*

\*Optional: For large O.D. cables, pliers may be helpful when lacing

Poor lacing

Good lacing

**7**

Flush Cutters only

Trim flush 0-1 mm (<0.04 in.)

> 1 mm (0.04 in.)

**8**

Remove excess shield to prevent interference when attaching boot

foil

OR

braid

**9**

Plug Latch

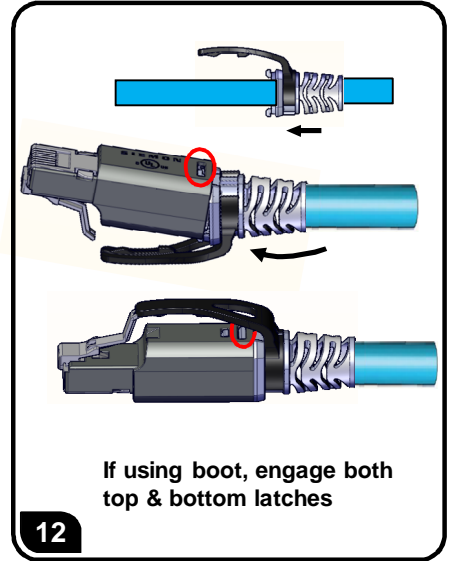
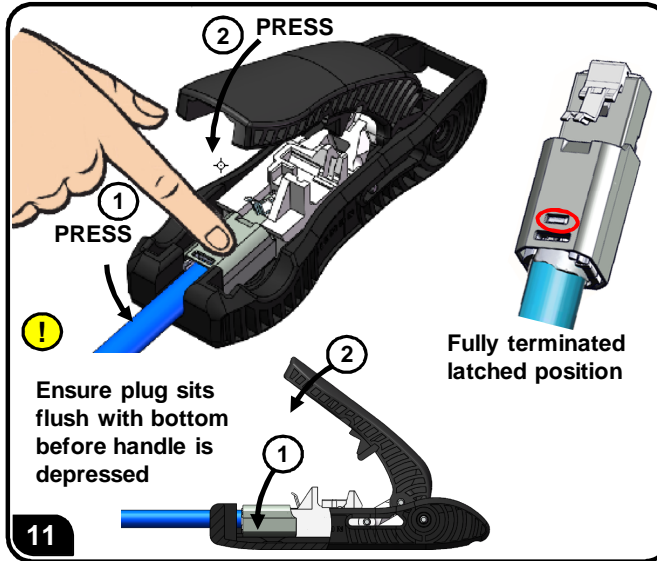
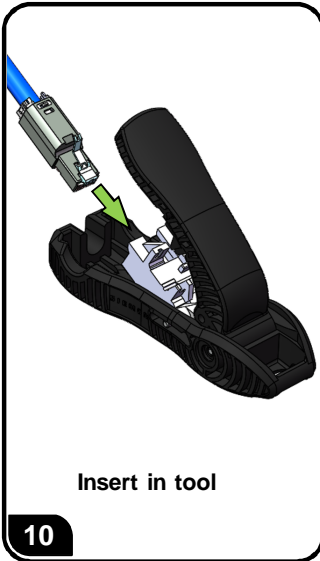
Latching side

Termination module latch

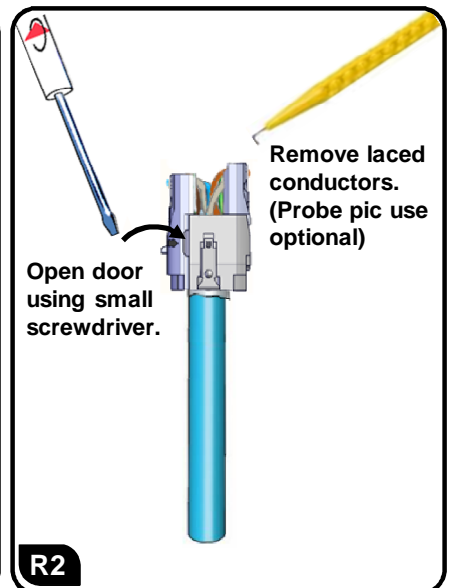
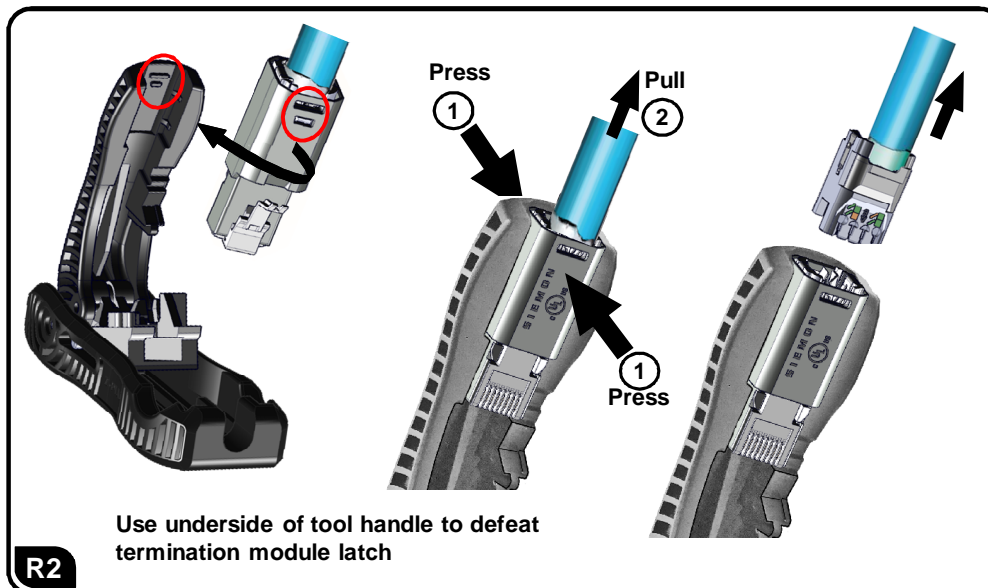
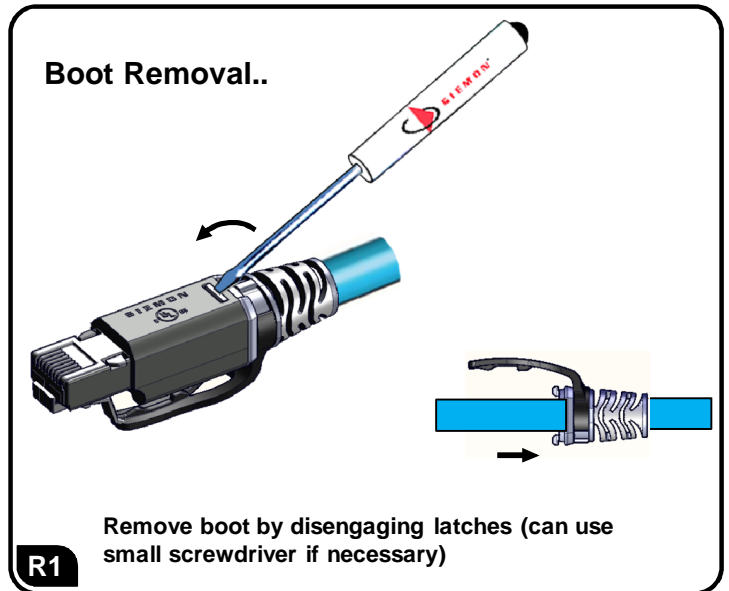
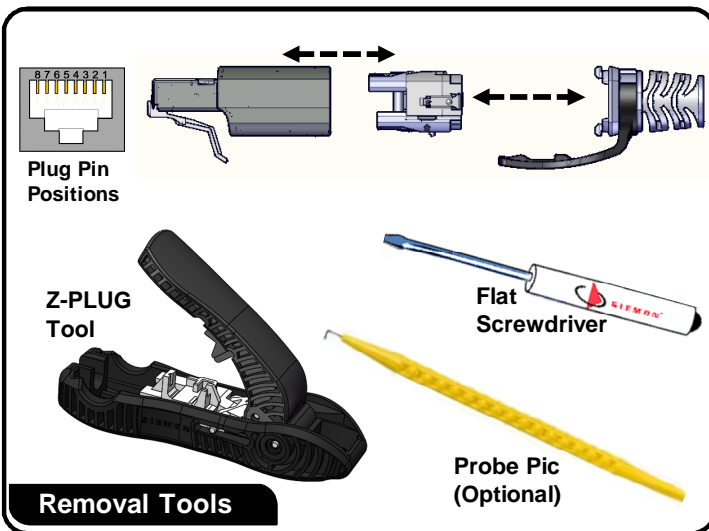
Preloaded position

Align termination module latch (blue/brown side) with plug latch.

# Z-PLUG Termination Instructions

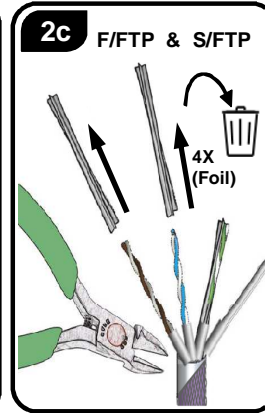
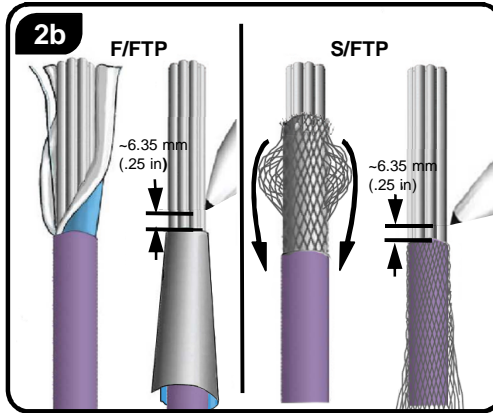
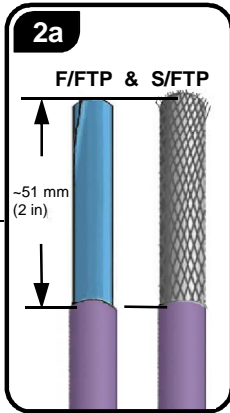


## Unassembling for re-termination..

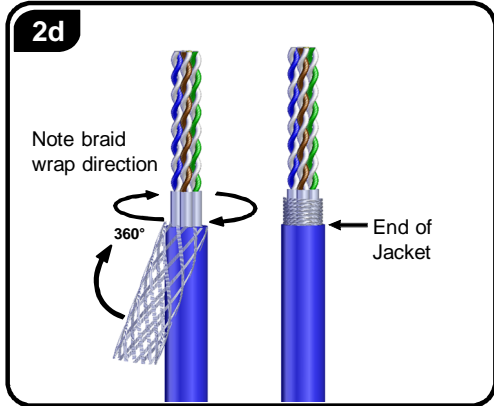
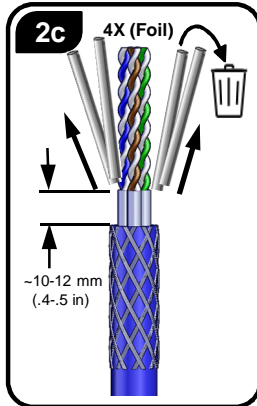
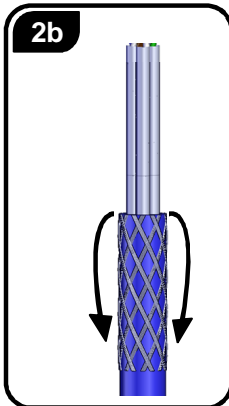
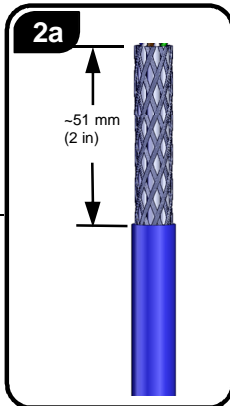


# Z-PLUG Termination – Alternate Cable types

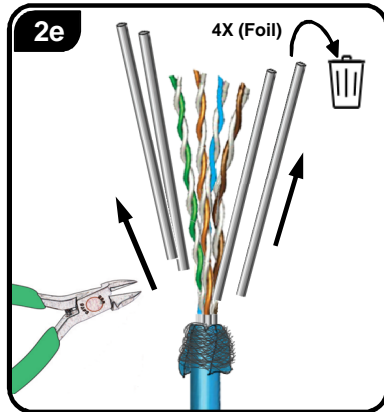
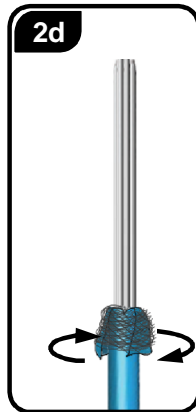
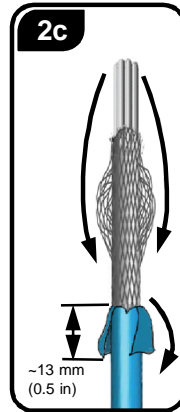
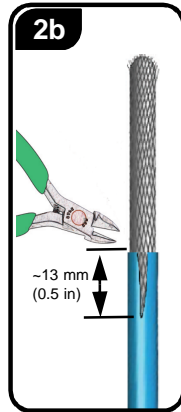
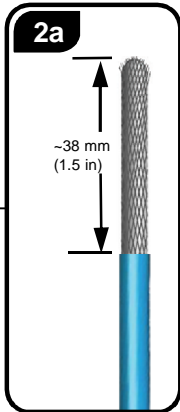
S/FTP and F/FTP Solid (23 AWG)



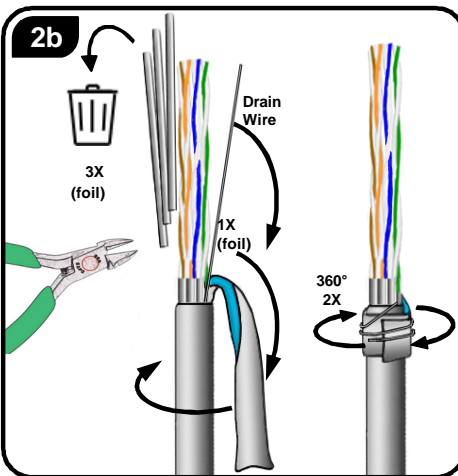
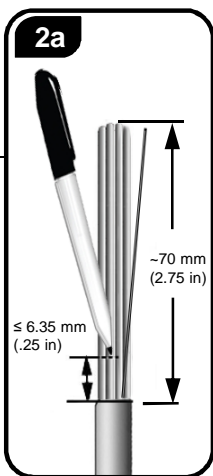
S/FTP Solid (22 AWG)



S/FTP Stranded (26 AWG)



U/FTP Solid



**\*Note for OSP Category 6A shielded cable:**  
Please refer to the supplemental cable preparation instructions available at: [www.siemon.com/us/download/installation.aspx](http://www.siemon.com/us/download/installation.aspx) and click on **WORK AREA**.

- To assist safe installations, comply with the following:**
- A. Use caution when installing or modifying telecommunications circuits.
  - B. Never touch uninsulated wire terminals unless the circuit has been disconnected.
  - C. Never install this device in a wet location.
  - D. Never install wiring during a lightning storm.
- Lors de l'installation, respectez les consignes de sécurité suivantes:**
- A. Utiliser avec prudence lors de l'installation ou de la modification circuits de télécommunications.
  - B. Ne jamais toucher les bornes de fil métallique non isolés sauf si le circuit a été débranché.
  - C. Ne jamais installer cet appareil dans un endroit humide.
  - D. Ne jamais installer pendant un orage.

